



**YOTI N.N. & ASSOCIATES, INC (YNN)**  
Industrial Hygiene and Environmental Services

October 20, 2024

Mr. Derek Kwon  
Montgomery County Public School  
Division of Sustainability and Compliance  
8301 Turkey Thicket Drive,  
Gaithersburg, Maryland 20879

**RE: Fiber-in-air Sampling – Joann Leleck Elementary School**

Dear Mr. Kwon:

Yoti N. N. & Associates, Inc. (YNN) performed a fiber-in-air sampling of Joann Leleck Elementary school (Site) per Montgomery County Public School (MCPS), Division of Sustainability and Compliance (DSC) request. The Site is located at 710 Beacon Road in Silver Spring, Maryland. The sampling request was made pursuant of building fire resulting in total collapse of the building structure. YNN mobilized to the Site and has been conducting air sampling, beginning on September 25, 2024 and will continue to collect environmental air samples until instructed otherwise.

The report present is for the fiber-in-air samples collected on October 14, 2024 through October 20, 2024.

YNN's Industrial Hygienist, Mr. John Ndanga, conducted the fiber-in-air sampling. The samples were collected along the fence that has been erected around the demolished building structure.

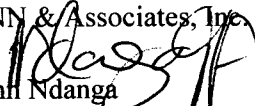
YNN collected the Phase Contrast Microscopy (PCM) air samples using low-volume air sampling pumps which were calibrated on Site with a rotameter. Collected air samples were analyzed using Phase Contrast Microscopy (PCM) in accordance with the National Institute for Occupational Safety and Health (NIOSH) Method 7400. PCM analysis was performed by assigned Industrial Hygienists who have completed the NIOSH 582 equivalency course.

Refer to the attached field data sheets and drawing for detailed sample locations and air sampling results. Based on the air sampling data collected, there is no evidence that elevated background fiber levels exist within the area of concern at Joann Leleck Elementary School.

YNN continues to perform fiber-in-air sampling at the Site.

Sincerely,

YNN & Associates, Inc.

  
John Ndanga  
Project Manager



**YOTI N.N. & ASSOCIATES, INC (YNN)**

Industrial Hygiene and Environmental Services

Page: 1 of 1

**DAILY LOG SHEET**

Date: 10/14/2024

Job Name: Joann Leleck ES

Time	Remarks
7:00	YNN's field IH arrived at Joann Leleck Elementary school (Site) to perform environmental (fiber-in-air) sampling following the fire incident which resulted in almost total colaps of the structure. The Site is located at 710 Beacon Road in Silver Spring, Maryland.
	Mr. Chris Marro (Sr. General Superintendent) with Gilbane informed IH that demo crew will continue to separate scrap metal, bricks and concrete from demo debris and also knocking down South Classrooms. Demo company is Bowen & Kron.
7:30	IH calibrated low volume air samplers with a rotameter and commenced environmental air sampling along the erected fence surrounding the demolished building structure.
	Air samplers were strategically positioned to capture air quality in different sections of the Site. Three excavators contiune to demo South Classrooms and will continue loading up separate dumpsters with scrap metal, concrete/bricks and demo debris. A worker will continue to utilize a water truck with a water cannon for dust suppression to minimize airborne particles during the demo operation.
8:00	The abatemnt crew from A-L Abatement arrived. IH was informed by A-L Abatement's proect manager that the crew is only dropping off supplies and equipments. They plan to start lining up the dumpsters with 6 mil poly tomorrow and start hauling away contaminated debris.
11:30	IH performed a walk through of the area. The demo operators continued to perform demo of South Classrooms and loading up dumpsters. Dust suppression via water cannon continues. Air samplers observed to be running properly. Dump trucks continued to haul away dumpster loads of separated demo debris, scrap metal and brick/concrete.
13:35	IH performed a walk through of the area and checked on the air samplers. Air samplers were observed running well. Demo operation observed to be moving along without any problems. Dust suppression with water cannon to minimize airborne particles during demo coninues.
15:15	The demo crew continue to demo and load up separate dumpsters with scrap metal, brick/ concrete and demo debris.
16:00	IH started collecting air samplers and air samples.
16:30	IH exited the site.
18:00-19:30	IH prepared air samples and performed air sample analysis via PCM. All air samples were



**AIR SAMPLE DATA SHEET**

**Client:** MCPS **Project Name:** Joann Leleck Elementary School  
**Work Area:** Along the Fence **Date:** 10/14/2024

Sample NO.	Location / Code Relation to work	FLOW RATE		Time		Total Time	Total Volume	Fibers	Fibers CC
		Start	End	On	Off				
101424-1	Environmental-Main Entrance on Fence	3	3	7:30	16:00	510	1530	3.5	< 0.01
101424-2	Environmental-Facing White Apartments	3	3	7:31	16:01	510	1530	2.5	< 0.01
101424-3	Environmental-Facing House 705	3	3	7:33	16:02	509	1527	2.5	< 0.01
101424-4	Environmental-Facing Brown Apts.	3	3	7:35	16:05	510	1530	6.5	< 0.01
101424-5	Environmental-Facing Brown Apts.	3	3	7:36	16:06	510	1530	5	< 0.01
101424-6	Environmental-Facing St. Camillus	3	3	7:42	16:08	506	1518	7.5	< 0.01
101424-7	Environmental-Facing St. Camillus	3	3	7:43	16:10	507	1521	9	< 0.01
101424-8	Environmental-Facing Playground	3	3	7:45	16:14	509	1527	5.5	< 0.01
101424-9	Environmental-Facing Playground	3	3	7:46	16:15	509	1527	7	< 0.01
101424-10	Environmental-Facing Gym	3	3	7:48	16:19	511	1533	9.5	< 0.01
101424-11	Environmental-Facing Gym	3	3	7:49	16:20	511	1533	8.5	< 0.01
101424-12	Environmental-Facing Field	3	3	7:52	16:22	510	1530	7.5	< 0.01
<b>Abbreviations:</b>	PRE - Pre-Abatement Sampling	BLK - Blank		NFO - No Fibers Observed					
	OGBA - Outside Glove Bag Area	IWA - Inside Work Area		Post - Final Clearance monitoring					
	IGBA - Inside Glove Bag Area	OWA - Outside Work Area		AMB - Ambient					
	PRS - Personal Sample	OBT - Outside Barrier Tape		CB - Critical Barrier					
	IBT - Inside Barrier Tape								

**Analyst:** John Ndanga  
**Date:** 10/14/2024





**YOTI N.N. & ASSOCIATES, INC (YNN)**

Industrial Hygiene and Environmental Services

**DAILY LOG SHEET**

Date: 10/15/2024

Job Name: Joann Leleck ES

Time	Remarks
7:00	YNN's field IH arrived at Joann Leleck Elementary school (Site) to perform environmental (fiber-in-air) sampling following the fire incident which resulted in almost total colaps of the structure. The Site is located at 710 Beacon Road in Silver Spring, Maryland.
	Mr. Chris Marro (Sr. General Superintendent) with Gilbane informed IH that demo crew will continue to separate scrap metal, bricks and concrete from demo debris and also knocking down South Classrooms. Demo company is Bowen & Kron.
7:10	IH calibrated low volume air samplers with a rotameter and commenced environmental air sampling along the erected fence surrounding the demolished building structure.
	Air samplers were strategically positioned to capture air quality in different sections of the Site.
	Three excavators continue to demo South Classrooms and will continue loading up separate dumpsters with scrap metal, concrete/bricks and demo debris. A worker will continue to utilize a water truck with a water cannon for dust suppression to minimize airborne particles during the demo operation.
	A-L Abatement started to lineup dumpsters with 6 mil poly as the dump trucks arrive.
	Once lined up with poly, the demo crew started loading them up with contaminated waste (wetted down) and hauled away for proper disposal.
10:00	IH performed a walk through of the area. The demo operators continued to perform demo of South Classrooms and loading up dumpsters. Dust suppression via water cannon continues.
	Air samplers observed to be running properly. Dump trucks continued to haul away dumpster loads of separated contaminated to the landfill for proper disposal.
13:15	IH performed a walk through of the area and checked on the air samplers. Air samplers were observed running well. Demo operation observed to be moving along without any problems.
	Dust suppression with water cannon to minimize airborne particles during demo coninues.
15:00	The demo crew continue demo and separating scrap metal, brick/concrete from the demo debris. Six forty foot lined dumpsters were loaded and hauled away to the landfill for desposal
16:00	IH started collecting air samplers and air samples.
16:30	IH exited the site.
18:00-19:30	IH prepared air samples and performed air sample analysis via PCM. All air samples were



**YOTI N.N. & ASSOCIATES, INC (YNN)**

Industrial Hygiene and Environmental Services

**AIR SAMPLE DATA SHEET**

**Client:** MCPS

**Project Name:** Joann Leleck Elementary School

**Work Area:** Along the Fence

**Date:** 10/15/2024

Sample NO.	Location / Code Relation to work	FLOW RATE		Time		Total Time	Total Volume	Fibers	Fibers CC
		Start	End	On	Off				
101524-1	Environmental-Main Entrance on Fence	3	3	7:10	16:00	530	1590	4.5	< 0.01
101524-2	Environmental-Facing White Apartments	3	3	7:11	16:01	530	1590	3.5	< 0.01
101524-3	Environmental-Facing House 705	3	3	7:12	16:03	531	1593	3	< 0.01
101524-4	Environmental-Facing Brown Apts.	3	3	7:15	16:07	532	1596	4.5	< 0.01
101524-5	Environmental-Facing Brown Apts.	3	3	7:16	16:08	532	1596	3.5	< 0.01
101524-6	Environmental-Facing St. Camillus	3	3	7:20	16:10	530	1590	6.5	< 0.01
101524-7	Environmental-Facing St. Camillus	3	3	7:21	16:11	530	1590	5.5	< 0.01
101524-8	Environmental-Facing Playground	3	3	7:23	16:13	530	1590	4	< 0.01
101524-9	Environmental-Facing Playground	3	3	7:24	16:14	530	1590	5.5	< 0.01
101524-10	Environmental-Facing Gym	3	3	7:27	16:17	530	1590	8	< 0.01
101524-11	Environmental-Facing Gym	3	3	7:28	16:18	530	1590	7.5	< 0.01
101524-12	Environmental-Facing Field	3	3	7:52	16:20	508	1524	6.5	< 0.01

Abbreviations:	PRE - Pre-Abatement Sampling	BLK - Blank	NFO - No Fibers Observed
	OGBA - Outside Glove Bag Area	IWA - Inside Work Area	Post - Final Clearance monitoring
	IGBA - Inside Glove Bag Area	OWA - Outside Work Area	AMB - Ambient
	PRS - Personal Sample	OBT - Outside Barrier Tape	CB - Critical Barrier
	IBT - Inside Barrier Tape		

**Analyst:** John Ndanga

**Date:** 10/15/2024





**YOTI N.N. & ASSOCIATES, INC (YNN)**

Industrial Hygiene and Environmental Services

**DAILY LOG SHEET**

**Date:** 10/16/2024

**Job Name:** Joann Leleck ES

<b>Time</b>	<b>Remarks</b>
7:00	YNN's field IH arrived at Joann Leleck Elementary school (Site) to perform environmental (fiber-in-air) sampling following the fire incident which resulted in almost total colaps of the structure. The Site is located at 710 Beacon Road in Silver Spring, Maryland.
	Mr. Chris Marro (Sr. General Superintendent) with Gilbane informed IH that demo crew will continue to separate scrap metal, bricks and concrete from demo debris and also knocking down South Classrooms. Demo company is Bowen & Kron.
7:15	IH calibrated low volume air samplers with a rotameter and commenced environmental air sampling along the erected fence surrounding the demolished building structure.
	Air samplers were strategically positioned to capture air quality in different sections of the Site.
	Three excavators continue to demo South Classrooms and will continue loading up separate dumpsters with scrap metal, concrete/bricks and demo debris. A worker will continue to utilize a water truck with a water cannon for dust suppression to minimize airborne particles during the demo operation.
	A-L Abatement arrived and will lineup dumpsters with 6 mil poly as the dump trucks arrive.
	Once lined up with poly, the demo crew will load them up with contaminated waste and hauled away for proper disposal.
10:30	IH performed a walk through of the area. The demo operators continued to perform demo of South Classrooms and loading up dumpsters. Dust suppression via water cannon continues.
	Air samplers observed to be running properly. Dump trucks continued to haul away dumpster loads of separated contaminated debris and scrap metal.
13:30	IH performed a walk through of the area and checked on the air samplers. Air samplers were observed running well. Demo operation observed to be moving along without any problems.
	Dust suppression with water cannon to minimize airborne particles during demo continues.
15:00	Six forty foot dumpsters where pulled away from the Site loaded with contaminated debris to the landfill for proper disposal. The debis was wetted down with the water cannon before being hauled away to the landfill in covered dumpsters.
16:00-16:30	IH collected air samples and sampres and exited the Site.
18:00-19:30	IH prepared air samples and performed air sample analysis via PCM. All air samples were





**AIR SAMPLE DATA SHEET**

**Client:** MCPS **Project Name:** Joann Leleck Elementary School  
**Work Area:** Along the Fence **Date:** 10/16/2024

Sample NO.	Location / Code Relation to work	FLOW RATE		Time		Total Time	Total Volume	Fibers	Fibers CC
		Start	End	On	Off				
101624-1	Environmental-Main Entrance on Fence	3	3	7:15	16:00	525	1575	2.5	< 0.01
101624-2	Environmental-Facing White Apartments	3	3	7:16	16:02	526	1578	4.5	< 0.01
101624-3	Environmental-Facing House 705	3	3	7:18	16:03	525	1575	3.5	< 0.01
101624-4	Environmental-Facing Brown Apts.	3	3	7:21	16:04	523	1569	5.5	< 0.01
101624-5	Environmental-Facing Brown Apts.	3	3	7:22	16:05	523	1569	3.5	< 0.01
101624-6	Environmental-Facing St. Camillus	3	3	7:28	16:10	522	1566	7	< 0.01
101624-7	Environmental-Facing St. Camillus	3	3	7:29	16:12	523	1569	5	< 0.01
101624-8	Environmental-Facing Playground	3	3	7:31	16:15	524	1572	6	< 0.01
101624-9	Environmental-Facing Playground	3	3	7:32	16:16	524	1572	4.5	< 0.01
101624-10	Environmental-Facing Gym	3	3	7:34	16:19	525	1575	9	< 0.01
101624-11	Environmental-Facing Gym	3	3	7:35	16:22	527	1581	7	< 0.01
101624-12	Environmental-Facing Field	3	3	7:52	16:20	508	1524	8.5	< 0.01
<b>Abbreviations:</b>									
	PRE - Pre-Abatement Sampling	BLK - Blank		IWA - Inside Work Area		NFO - No Fibers Observed			
	OGBA - Outside Glove Bag Area	IWA - Inside Work Area		OWA - Outside Work Area		Post - Final Clearance monitoring			
	IGBA - Inside Glove Bag Area	OWA - Outside Work Area		OBT - Outside Barrier Tape		AMB - Ambient			
	PRS - Personal Sample					CB - Critical Barrier			
	IBT - Inside Barrier Tape								

**Analyst:** John Ndanga  
**Date:** 10/16/2024





**YOTI N.N. & ASSOCIATES, INC (YNN)**

Industrial Hygiene and Environmental Services

Page: 1 of 1

### DAILY LOG SHEET

Date: 10/17/2024

Job Name: Joann Leleck ES

Time	Remarks
7:00	YNN's field IH arrived at Joann Leleck Elementary school (Site) to perform environmental (fiber-in-air) sampling following the fire incident which resulted in almost total colaps of the structure. The Site is located at 710 Beacon Road in Silver Spring, Maryland.
	Mr. Chris Marro (Sr. General Superintendent) with Gilbane informed IH that demo crew will continue to separate scrap metal, bricks and concrete from demo debris and also knocking down South Classrooms. Demo company is Bowen & Kron.
7:10	IH calibrated low volume air samplers with a rotameter and commenced environmental air sampling along the erected fence surrounding the demolished building structure.
	Air samplers were strategically positioned to capture air quality in different sections of the Site.
	Three excavators continue to demo South Classrooms and will continue loading up separate dumpsters with scrap metal, concrete/bricks and demo debris. A worker will continue to utilize a water truck with a water cannon for dust suppression to minimize airborne particles during the demo operation.
	A-L Abatement will lineup dumpsters with 6 mil poly as the dump trucks arrive.
	Once lined up with poly, the demo crew will load them up with contaminated waste and hauled away to the landfill for proper disposal.
10:00	IH performed a walk through of the area. The demo operators continued to perform demo of South Classrooms and loading up dumpsters. Dust suppression via water cannon continues.
	Air samplers observed to be running properly. Dump trucks continued to haul away dumpster loads of contaminated debris separated from brick/concrete and scrap metal.
13:15	IH performed a walk through of the area and checked on the air samplers. Air samplers were observed running well. Demo operation observed to be moving along without any problems.
	Dust suppression with water cannon to minimize airborne particles during demo continues.
14:00	Six forty foot dumpsters where pulled away from the Site loaded with contaminated debris to the landfill for proper disposal. The debris was wetted down with the water cannon before being hauled away to the landfill in covered dumpsters.
16:00-16:30	IH collected air samples and sampres and exited the Site.
18:00-19:30	IH prepared air samples and performed air sample analysis via PCM. All air samples were



**AIR SAMPLE DATA SHEET**

**Client:** MCPS **Project Name:** Joann Leleck Elementary School  
**Work Area:** Along the Fence **Date:** 10/17/2024

Sample NO.	Location / Code Relation to work	FLOW RATE		Time		Total Time	Total Volume	Fibers	Fibers CC
		Start	End	On	Off				
101724-1	Environmental-Main Entrance on Fence	3	3	7:10	16:00	530	1590	4	< 0.01
101724-2	Environmental-Facing White Apartments	3	3	7:11	16:02	531	1593	3	< 0.01
101724-3	Environmental-Facing House 705	3	3	7:13	16:04	531	1593	3.5	< 0.01
101724-4	Environmental-Facing Brown Apts.	3	3	7:15	16:06	531	1593	6.5	< 0.01
101724-5	Environmental-Facing Brown Apts.	3	3	7:16	16:07	531	1593	2.5	< 0.01
101724-6	Environmental-Facing St. Camillus	3	3	7:20	16:12	532	1596	5.5	< 0.01
101724-7	Environmental-Facing St. Camillus	3	3	7:21	16:14	533	1599	4.5	< 0.01
101724-8	Environmental-Facing Playground	3	3	7:22	16:16	534	1602	4.5	< 0.01
101724-9	Environmental-Facing Playground	3	3	7:24	16:17	533	1599	5.5	< 0.01
101724-10	Environmental-Facing Gym	3	3	7:27	16:22	535	1605	7.5	< 0.01
101724-11	Environmental-Facing Gym	3	3	7:28	16:24	536	1608	8.5	< 0.01
101724-12	Environmental-Facing Field	3	3	7:30	16:27	537	1611	8	< 0.01
<b>Abbreviations:</b>									
PRE - Pre-Abatement Sampling				BLK - Blank		NFO - No Fibers Observed			
OGBA - Outside Glove Bag Area				IWA - Inside Work Area		Post - Final Clearance monitoring			
IGBA - Inside Glove Bag Area				OWA - Outside Work Area		AMB - Ambient			
PRS - Personal Sample				OBT - Outside Barrier Tape		CB - Critical Barrier			
IBT - Inside Barrier Tape									

**Analyst:** John Ndanga

**Date:** 10/17/2024





**DAILY LOG SHEET**

**Date:** 10/18/2024

**Job Name:** Joann Leleck ES

<b>Time</b>	<b>Remarks</b>
7:00	YNN's field IH arrived at Joann Leleck Elementary school (Site) to perform environmental (fiber-in-air) sampling following the fire incident which resulted in almost total colaps of the structure. The Site is located at 710 Beacon Road in Silver Spring, Maryland.
	Mr. Chris Marro (Sr. General Superintendent) with Gilbane informed IH that demo crew will continue to separate scrap metal, bricks and concrete from demo debris and also knocking down South Classrooms. Demo company is Bowen & Kron.
7:30	IH calibrated low volume air samplers with a rotameter and commenced environmental air sampling along the erected fence surrounding the demolished building structure.
	Air samplers were strategically positioned to capture air quality in different sections of the Site.
	Three excavators continue to demo South Classrooms and will continue loading up separate dumpsters with scrap metal, concrete/bricks and demo debris. A worker will continue to utilize a water truck with a water cannon for dust suppression to minimize airborne particles during the demo operation.
	A-L Abatement will lineup dumpsters with 6 mil poly as the dump trucks arrive.
	Once lined up with poly, the demo crew will loads them up with contaminated waste and hauled away to the landfill for proper disposal.
10:15	IH performed a walk through of the area. The demo operators continued to perform demo of South Classrooms and loading up dumpsters. Dust suppression via water cannon continues.
	Air samplers observed to be running properly. Dump trucks continued to haul away dumpster loads of contaminated debris separated from brick/concrete and scrap metal.
13:00	IH performed a walk through of the area and checked on the air samplers. Air samplers were observed running well. Demo operation observed to be moving along without any problems.
	Dust suppression with water cannon to minimize airborne particles during demo continues.
14:00	Six forty foot dumpsters where pulled away from the Site loaded with contaminated debris to the landfill for proper disposal. The debris was wetted down with the water cannon before being loaded into the dumpsters and hauled away to the landfill for proper disposal.
16:00-16:30	IH collected air samples and sampres and exited the Site.
18:00-19:30	IH prepared air samples and performed air sample analysis via PCM. All air samples were



**AIR SAMPLE DATA SHEET**

**Client:** MCPS **Project Name:** Joann Leleck Elementary School  
**Work Area:** Along the Fence **Date:** 10/18/2024

Sample NO.	Location / Code Relation to work	FLOW RATE		Time		Total Time	Total Volume	Fibers	Fibers CC
		Start	End	On	Off				
101824-1	Environmental-Main Entrance on Fence	3	3	7:30	16:00	510	1530	3	< 0.01
101824-2	Environmental-Facing White Apartments	3	3	7:31	16:01	510	1530	2	< 0.01
101824-3	Environmental-Facing House 705	3	3	7:32	16:03	511	1533	4	< 0.01
101824-4	Environmental-Facing Brown Apts.	3	3	7:34	16:05	511	1533	6.5	< 0.01
101824-5	Environmental-Facing Brown Apts.	3	3	7:35	16:06	511	1533	5.5	< 0.01
101824-6	Environmental-Facing St. Camillus	3	3	7:40	16:07	507	1521	4.5	< 0.01
101824-7	Environmental-Facing St. Camillus	3	3	7:41	16:08	507	1521	3.5	< 0.01
101824-8	Environmental-Facing Playground	3	3	7:43	16:10	507	1521	5	< 0.01
101824-9	Environmental-Facing Playground	3	3	7:44	16:13	509	1527	6	< 0.01
101824-10	Environmental-Facing Gym	3	3	7:47	16:15	508	1524	5.5	< 0.01
101824-11	Environmental-Facing Gym	3	3	7:48	16:16	508	1524	4	< 0.01
101824-12	Environmental-Facing Field	3	3	7:52	16:19	507	1521	6	< 0.01
<b>Abbreviations:</b>									
	PRE - Pre-Abatement Sampling	BLK - Blank		NFO - No Fibers Observed					
	OGBA - Outside Glove Bag Area	IWA - Inside Work Area		Post - Final Clearance monitoring					
	IGBA - Inside Glove Bag Area	OWA - Outside Work Area		AMB - Ambient					
	PRS - Personal Sample	OBT - Outside Barrier Tape		CB - Critical Barrier					
	IBT - Inside Barrier Tape								

**Analyst:** John Ndanga  
**Date:** 10/18/2024









**YOTI N.N. & ASSOCIATES, INC (YNN)**

Industrial Hygiene and Environmental Services

**AIR SAMPLE DATA SHEET**

**Client:** MCPS

**Project Name:** Joann Leleck Elementary School

**Work Area:** Along the Fence

**Date:** 10/19/2024

Sample NO.	Location / Code Relation to work	FLOW RATE		Time		Total Time	Total Volume	Fibers	Fibers CC
		Start	End	On	Off				
101924-1	Environmental-Main Entrance on Fence	4	4	7:30	13:30	360	1440	5.5	< 0.01
101924-2	Environmental-Facing White Apartments	4	4	7:31	13:31	360	1440	6	< 0.01
101924-3	Environmental-Facing House 705	4	4	7:32	13:32	360	1440	5.5	< 0.01
101924-4	Environmental-Facing Brown Apts.	4	4	7:34	13:35	361	1444	6.5	< 0.01
101924-5	Environmental-Facing Brown Apts.	4	4	7:35	13:36	361	1444	7.5	< 0.01
101924-6	Environmental-Facing St. Camillus	4	4	7:40	13:38	358	1432	5.5	< 0.01
101924-7	Environmental-Facing St. Camillus	4	4	7:41	13:39	358	1432	6.5	< 0.01
101924-8	Environmental-Facing Playground	4	4	7:43	13:41	358	1432	5	< 0.01
101924-9	Environmental-Facing Playground	4	4	7:45	13:44	359	1436	5.5	< 0.01
101924-10	Environmental-Facing Gym	4	4	7:47	13:47	360	1440	6.5	< 0.01
101924-11	Environmental-Facing Gym	4	4	7:48	13:48	360	1440	9	< 0.01
101924-12	Environmental-Facing Field	4	4	7:51	13:51	360	1440	7.5	< 0.01

**Abbreviations:** PRE - Pre-Abatement Sampling  
 OGBA - Outside Glove Bag Area  
 IGBA - Inside Glove Bag Area  
 PRS - Personal Sample  
 IBT - Inside Barrier Tape  
 BLK - Blank  
 IWA - Inside Work Area  
 OWA - Outside Work Area  
 OBT - Outside Barrier Tape  
 NFO - No Fibers Observed  
 Post - Final Clearance monitoring  
 AMB - Ambient  
 CB - Critical Barrier

**Analyst:** John Ndanga

**Date:** 10/19/2024







**AIR SAMPLE DATA SHEET**

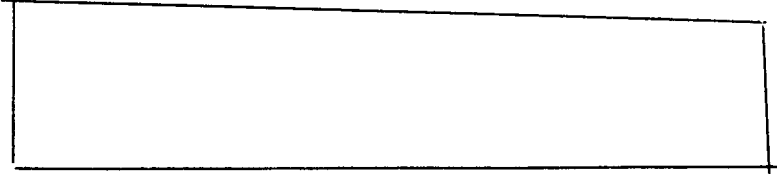
**Client:** MCPS **Project Name:** Joann Leleck Elementary School  
**Work Area:** Along the Fence **Date:** 10/20/2024

Sample NO.	Location / Code Relation to work	FLOW RATE		Time		Total Time	Total Volume	Fibers	Fibers CC
		Start	End	On	Off				
102024-1	Environmental-Main Entrance on Fence	4	4	7:30	13:15	345	1380	3	< 0.01
102024-2	Environmental-Facing White Apartments	4	4	7:31	13:16	345	1380	4.5	< 0.01
102024-3	Environmental-Facing House 705	4	4	7:33	13:18	345	1380	5.5	< 0.01
102024-4	Environmental-Facing Brown Apts.	4	4	7:35	13:21	346	1384	4.5	< 0.01
102024-5	Environmental-Facing Brown Apts.	4	4	7:36	13:13	337	1348	5	< 0.01
102024-6	Environmental-Facing St. Camillus	4	4	7:40	13:18	338	1352	5.5	< 0.01
102024-7	Environmental-Facing St. Camillus	4	4	7:41	13:19	338	1352	4.5	< 0.01
102024-8	Environmental-Facing Playground	4	4	7:44	13:20	336	1344	3.5	< 0.01
102024-9	Environmental-Facing Playground	4	4	7:45	13:21	336	1344	5	< 0.01
102024-10	Environmental-Facing Gym	4	4	7:48	13:26	338	1352	6.5	< 0.01
102024-11	Environmental-Facing Gym	4	4	7:49	13:27	338	1352	5.5	< 0.01
102024-12	Environmental-Facing Field	4	4	7:52	13:30	338	1352	6.5	< 0.01
<b>Abbreviations:</b>									
	PRE - Pre-Abatement Sampling	BLK - Blank		IWA - Inside Work Area		NFO - No Fibers Observed			
	OGBA - Outside Glove Bag Area	IWA - Inside Work Area		OWA - Outside Work Area		Post - Final Clearance monitoring			
	IGBA - Inside Glove Bag Area	OWA - Outside Work Area		OBT - Outside Barrier Tape		AMB - Ambient			
	PRS - Personal Sample					CB - Critical Barrier			
	IBT - Inside Barrier Tape								

**Analyst:** John Ndanga  
**Date:** 10/20/2024



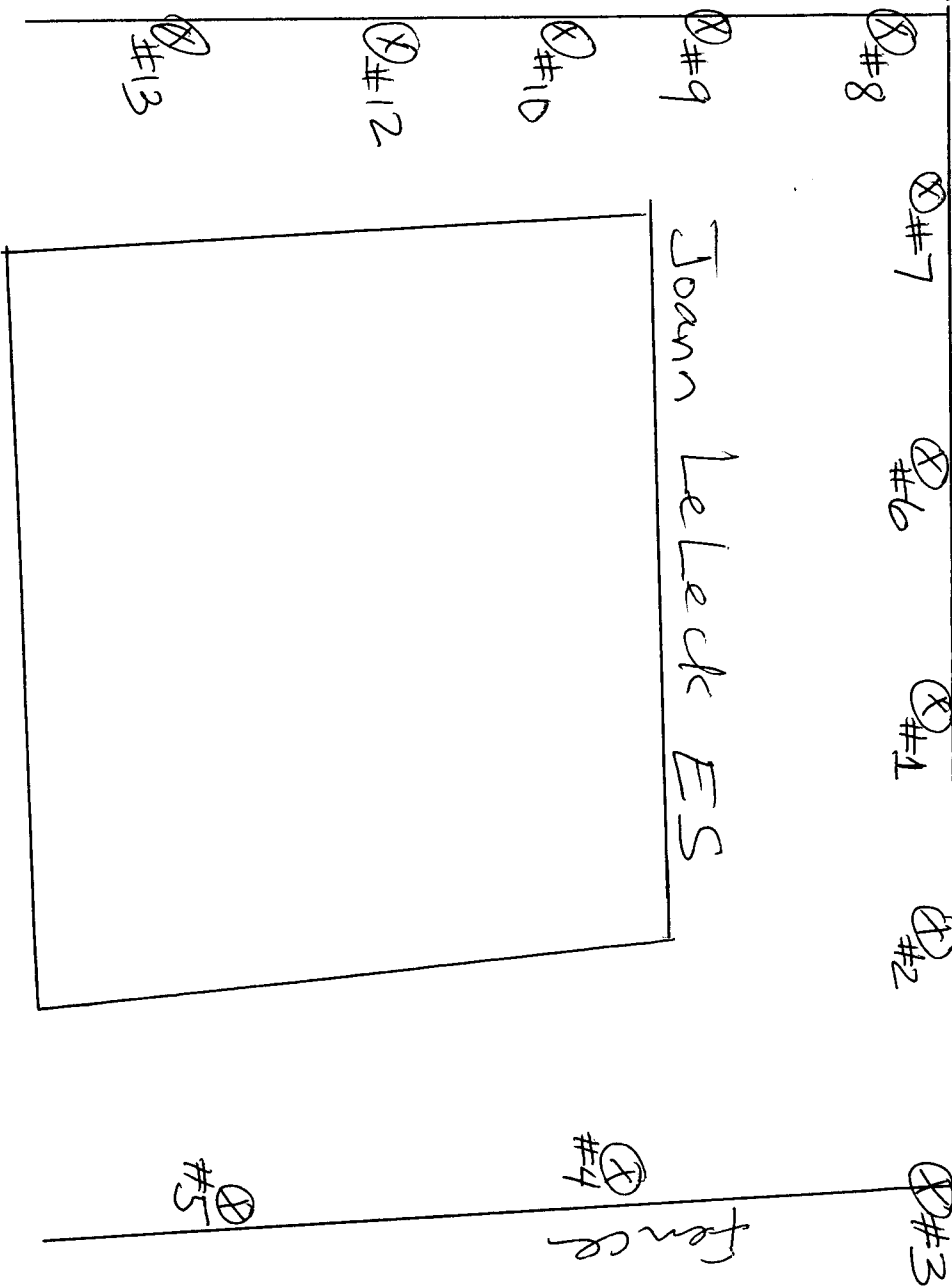
Field



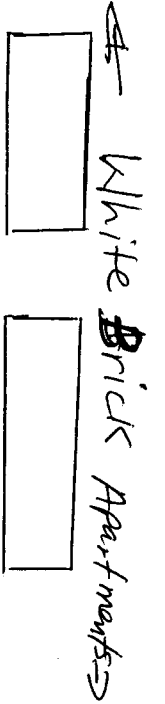
Playground



Fence

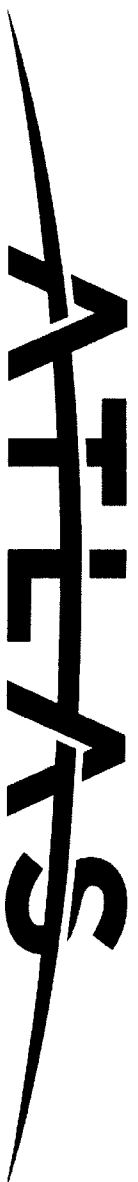


St. Camillus School



House #705





Approval No.: 21 13 01

## Certificate of Achievement

Awarded to

**John Ndanga**

In recognition of successful completion of the course entitled

# ASBESTOS ABATEMENT SUPERVISOR REVIEW

An 8-Hour annual refresher program of study presented in accordance with the provisions of the U.S. Environmental Protection Agency Model Accreditation Plan 40 CFR Part 763, Appendix C to SUBPART E, for Accreditation under TSCA Title II



23-1103

Certificate Number

Location: Columbia, MD

November 18, 2023

Examination Date

November 18, 2023

November 18, 2024

Course Date

Expiration Date

9231 Rumsey Road Columbia, Maryland 21045

410-381-0232 Office

410-423-9235 Direct

Clayton E. Miller Course Instructor

Handwritten signature of Clayton E. Miller in black ink.

Handwritten signature of Carla M. Gomez in black ink.

Carla M. Gomez Course Director



THE  
DEEP SOUTH CENTER FOR OCCUPATIONAL  
HEALTH AND SAFETY

CERTIFIES THAT

John Ndanga

HAS SATISFACTORILY COMPLETED

Sampling and Evaluating Airborne Asbestos Dust—NIOSH 582  
Birmingham, Alabama  
November 9-12, 1987

AND IS HEREBY AWARDED THIS CERTIFICATE

PROGRAM DIRECTOR



COURSE INSTRUCTOR



A NIOSH-Supported Educational Resource Center  
University of Alabama at Birmingham & Auburn University

