

THOMAS S. WOOTTON HIGH SCHOOL

SITE IMPROVEMENTS PROJECT
COMMUNITY MEETING #1
JULY 13, 2023



WOOTTON

PATRIOTS

THOMAS S. WOOTTON HIGH SCHOOL

SITE IMPROVEMENTS PROJECT PROJECT INFORMATION

PROJECT PAGE:

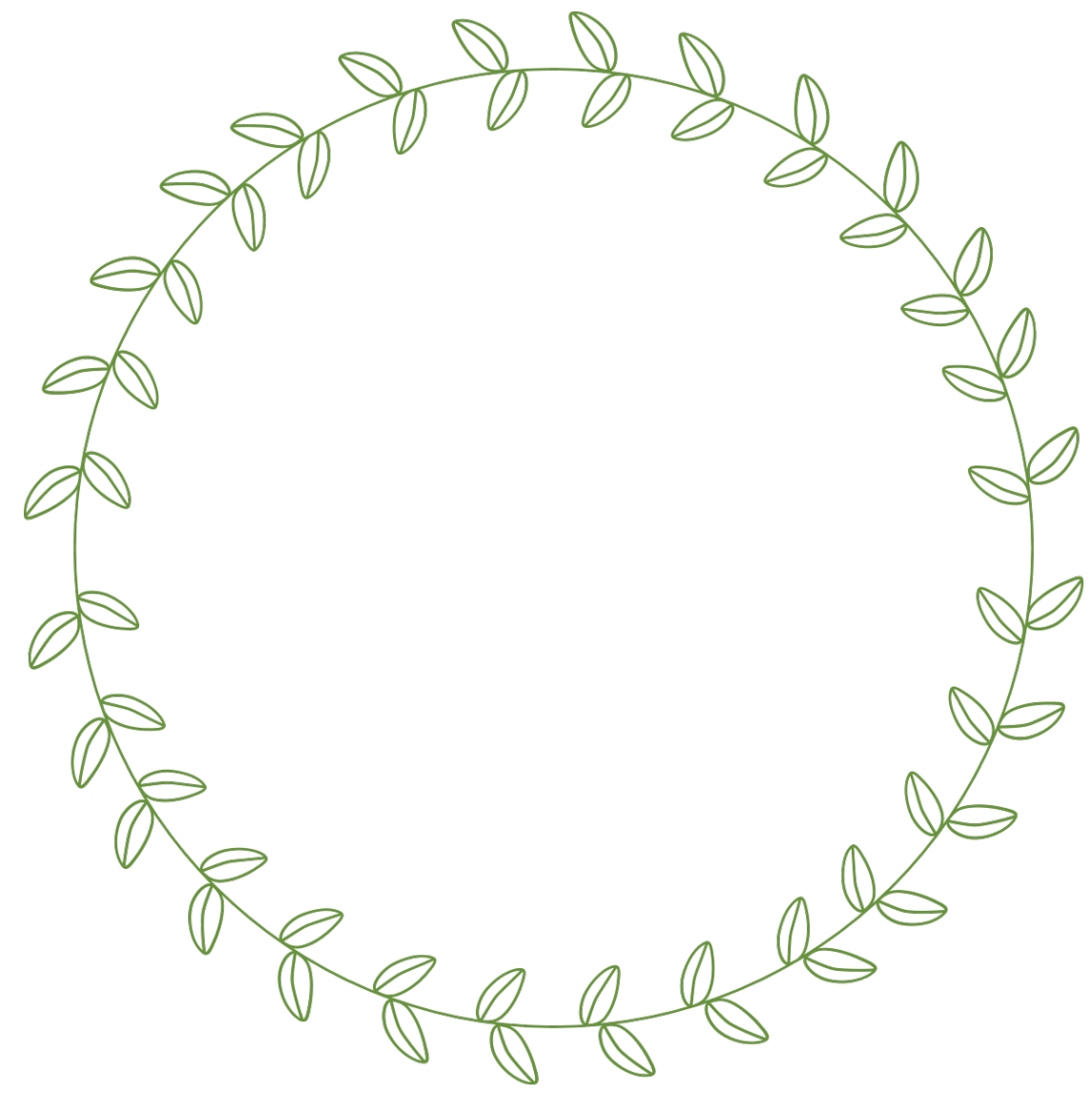
<https://www2.montgomeryschoolsmd.org/departments/facilities/construction/project/woottonhs/>

PROJECT MANAGER:

ELEESHA DALEY - Eleesha_Daley@mcpsmd.org

PROJECT MANAGER

DIVISION OF DESIGN AND CONSTRUCTION



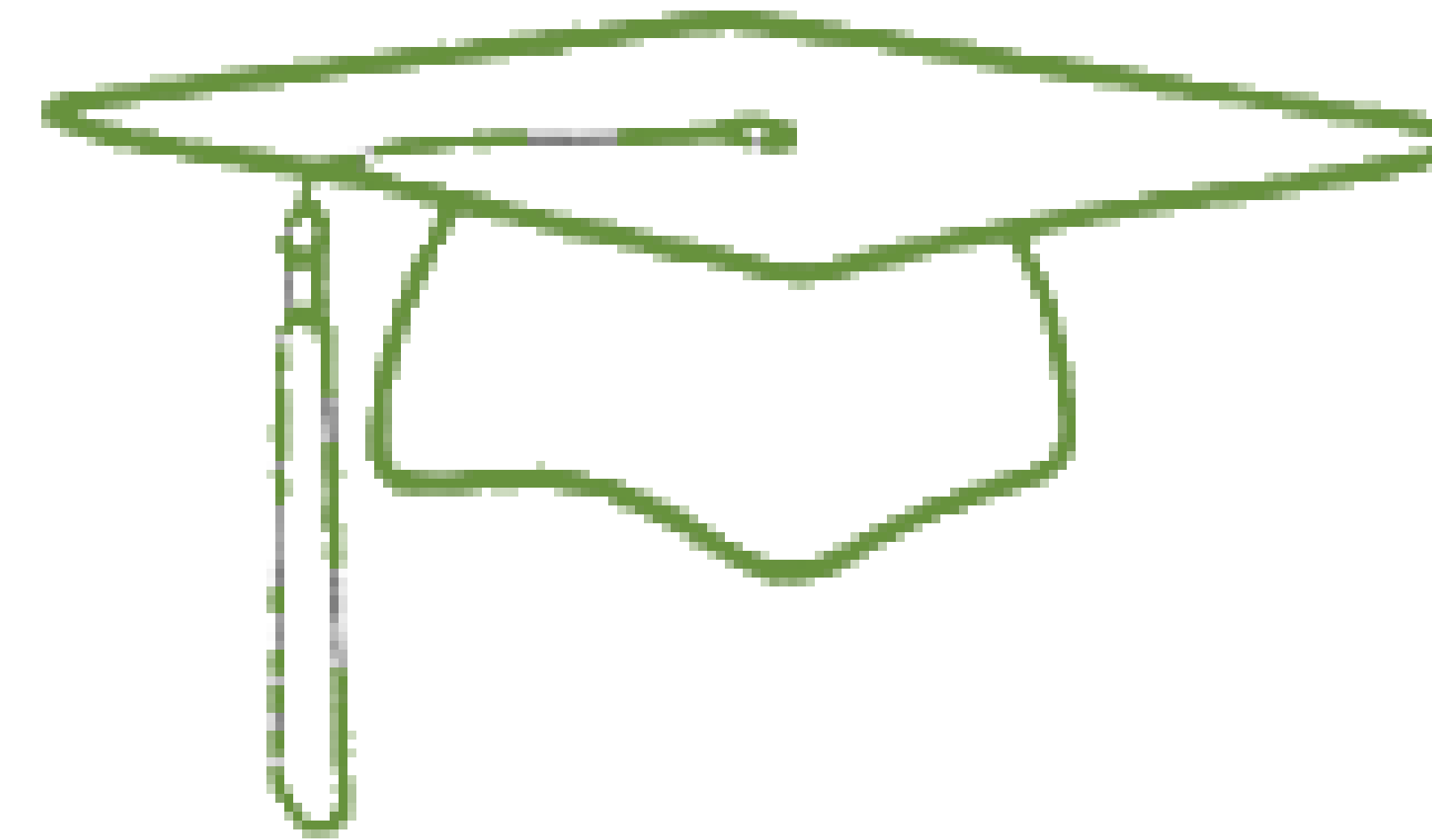
64 Years

We have been in business since **1955.**



26 Employees

- 8 architects
- 10 LEED APs
- 2 interior designers
- 2 licensed accessibility inspectors/plans examiners
- 9 production staff
- 1 Educational Facility Planner
- 1 CPTED Certified Professional



200+ School Projects
25+ High Schools

\$1 Billion in K-12 Construction



30+ Yrs with MCPS

We have worked extensively with the IAC and PSCP. 30+ MCPS Projects.



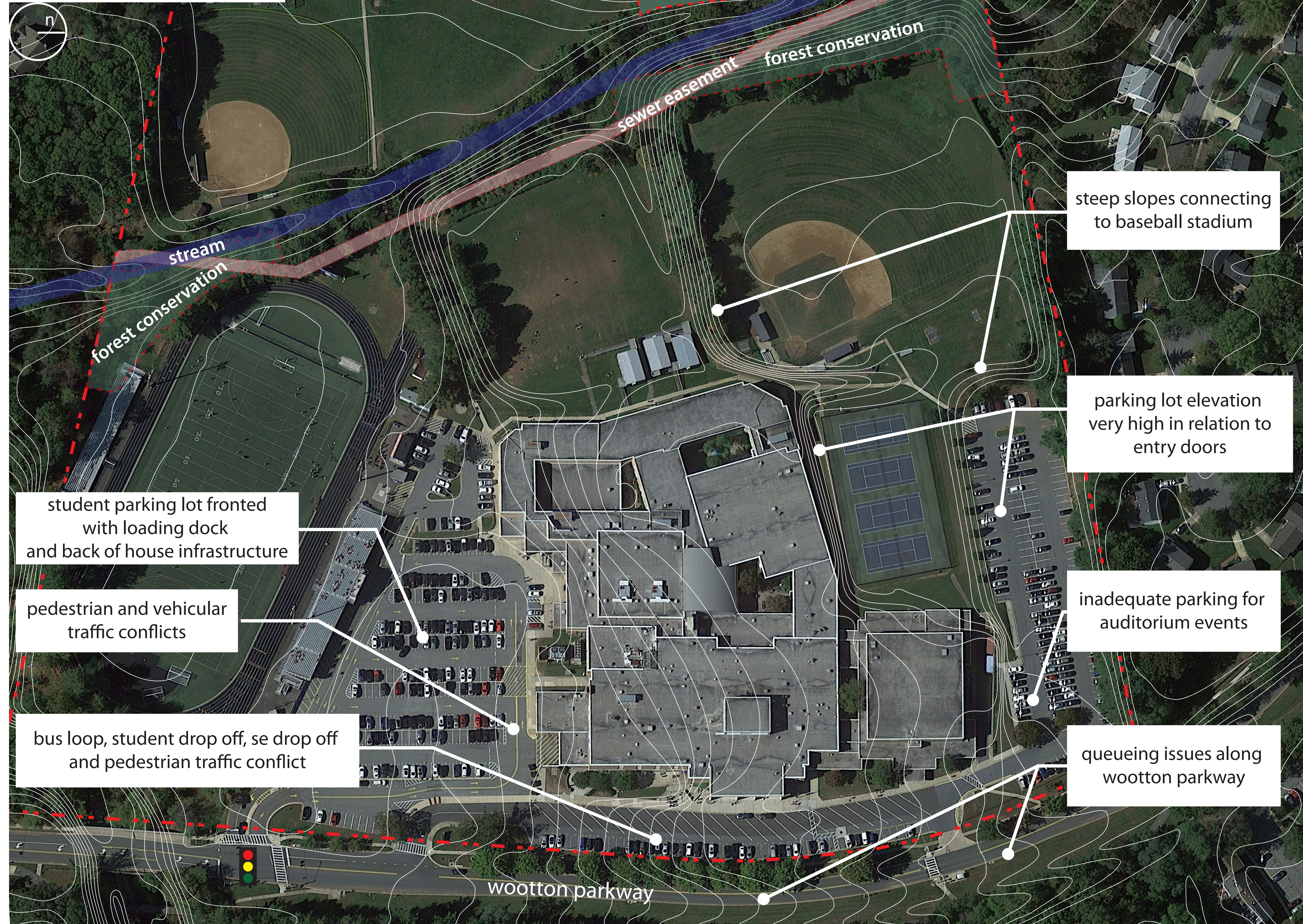
THOMAS S. WOOTTON HIGH SCHOOL SITE IMPROVEMENTS PROJECT

EXISTING CONDITIONS NOTES

- Various points of pedestrian and vehicular conflict
- Steep slope across entire site from South (low) to North (high)
- Accessibility issues in various places
- Placement of bus loop at front of building is problematic for operations and safety

EXISTING CONDITIONS

SITE PLAN



THOMAS S. WOOTTON HIGH SCHOOL SITE IMPROVEMENTS PROJECT

OPTION 1 NOTES

- Separation of 3 major modes of transportation: bus, student and staff entries are all separate
- Visitor parking and student drop off at front of building
- Main entrance on lower level adjacent to bus loop and student drop off
- Added retaining wall in North parking lot to make up for site slopes
- Connection between athletics fields and building to improve safety and connectivity
- Re-graded baseball stadium to improve access
- Relocated tennis courts
- Expansion of existing building at NW corner of building

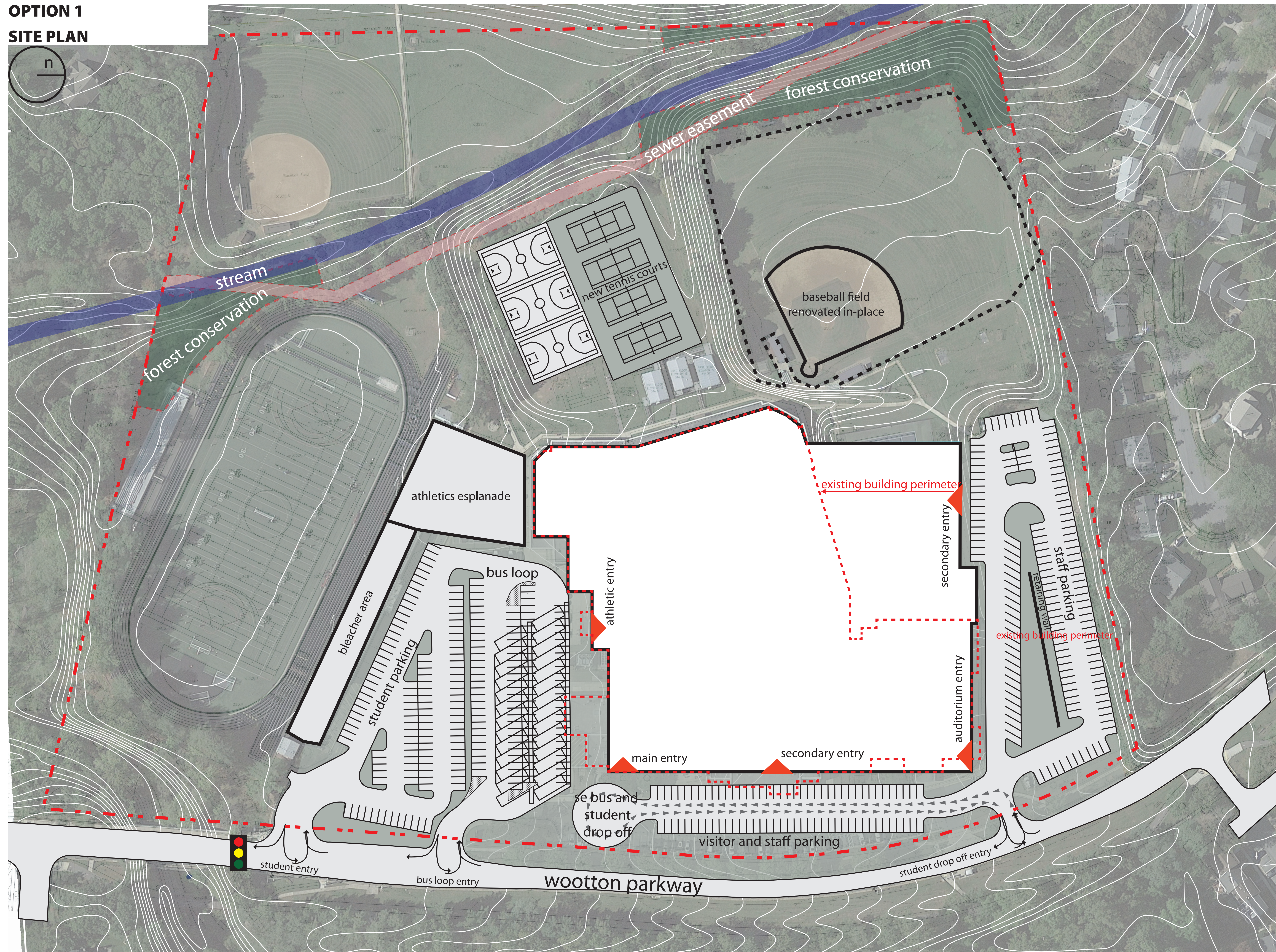
Pros

- Prominent corner entry and street presence for use by all students
- Long queue for student drop-off
- Flexible bus parking area allows for more parking during events
- Re-grading of site improves accessibility

Cons

- Combination of student parking and bus parking could create pedestrian conflict
- Loss of site space for new tennis court area
- Some new parking area will require demolition of existing building footprint
- Loss of current student parking capacity

OPTION 1 SITE PLAN



THOMAS S. WOOTTON HIGH SCHOOL SITE IMPROVEMENTS PROJECT

OPTION 1 NOTES

- Separation of 3 major modes of transportation: bus, student and staff entries are all separate
- Visitor parking and student drop off at front of building
- Main entrance on lower level adjacent to bus loop and student drop off
- Added retaining wall in North parking lot to make up for site slopes
- Connection between athletics fields and building to improve safety and connectivity
- Re-graded baseball stadium to improve access
- Relocated tennis courts
- Expansion of existing building at NW corner of building

Pros

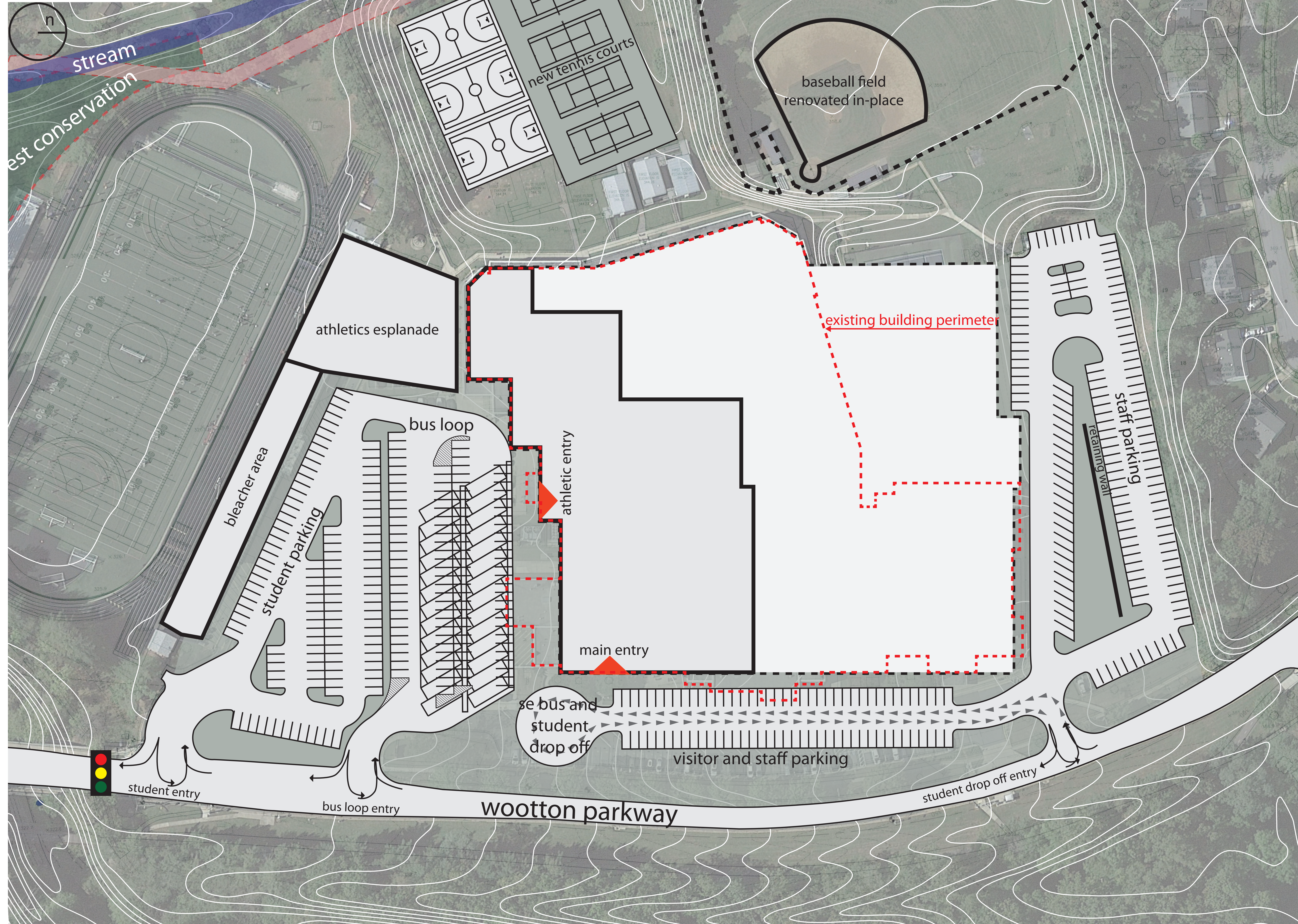
- Prominent corner entry and street presence for use by all students
- Long queue for student drop-off
- Flexible bus parking area allows for more parking during events
- Re-grading of site improves accessibility

Cons

- Combination of student parking and bus parking could create pedestrian conflict
- Loss of site space for new tennis court area
- Some new parking area will require demolition of existing building footprint
- Loss of current student parking capacity

OPTION 1

LOWER LEVEL



THOMAS S. WOOTTON HIGH SCHOOL SITE IMPROVEMENTS PROJECT

OPTION 1 NOTES

- Separation of 3 major modes of transportation: bus, student and staff entries are all separate
- Visitor parking and student drop off at front of building
- Main entrance on lower level adjacent to bus loop and student drop off
- Added retaining wall in North parking lot to make up for site slopes
- Connection between athletics fields and building to improve safety and connectivity
- Re-graded baseball stadium to improve access
- Relocated tennis courts
- Expansion of existing building at NW corner of building

Pros

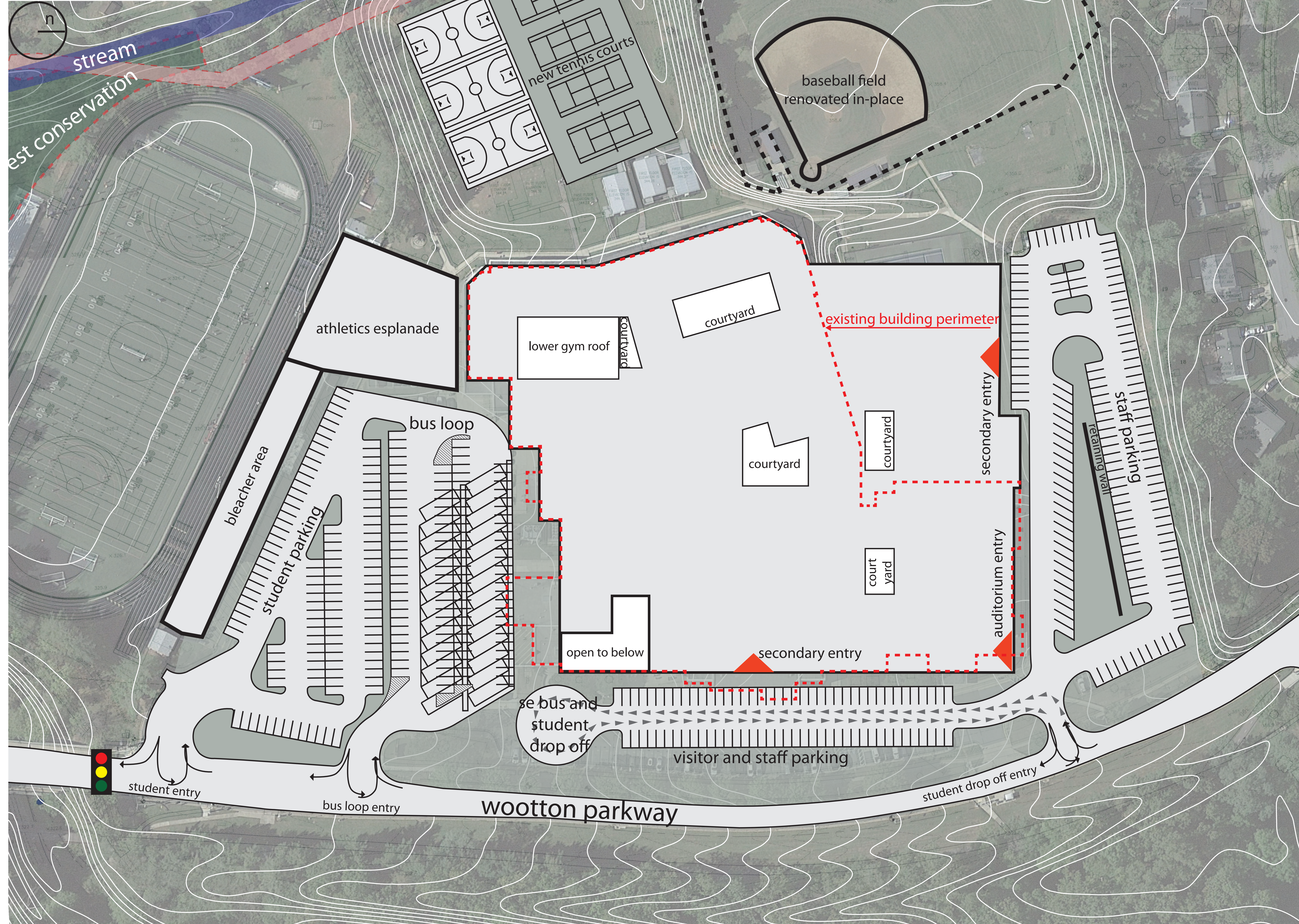
- Prominent corner entry and street presence for use by all students
- Long queue for student drop-off
- Flexible bus parking area allows for more parking during events
- Re-grading of site improves accessibility

Cons

- Combination of student parking and bus parking could create pedestrian conflict
- Loss of site space for new tennis court area
- Some new parking area will require demolition of existing building footprint
- Loss of current student parking capacity

OPTION 1

FIRST LEVEL



THOMAS S. WOOTTON HIGH SCHOOL SITE IMPROVEMENTS PROJECT

OPTION 2 NOTES

- Long student drop off route resulting in fewer back-ups along Wootton Parkway
- Combination of student parking and drop off that funnels to main entry at front or secondary entry at new addition
- Bus and special education drop off consolidated to the same location with shared access to main entrance
- Additional site area in front of school given to staff parking instead of buses.
- Re-graded baseball stadium to improve access
- Relocated tennis courts
- Added retaining wall in North parking lot to improve site connectivity

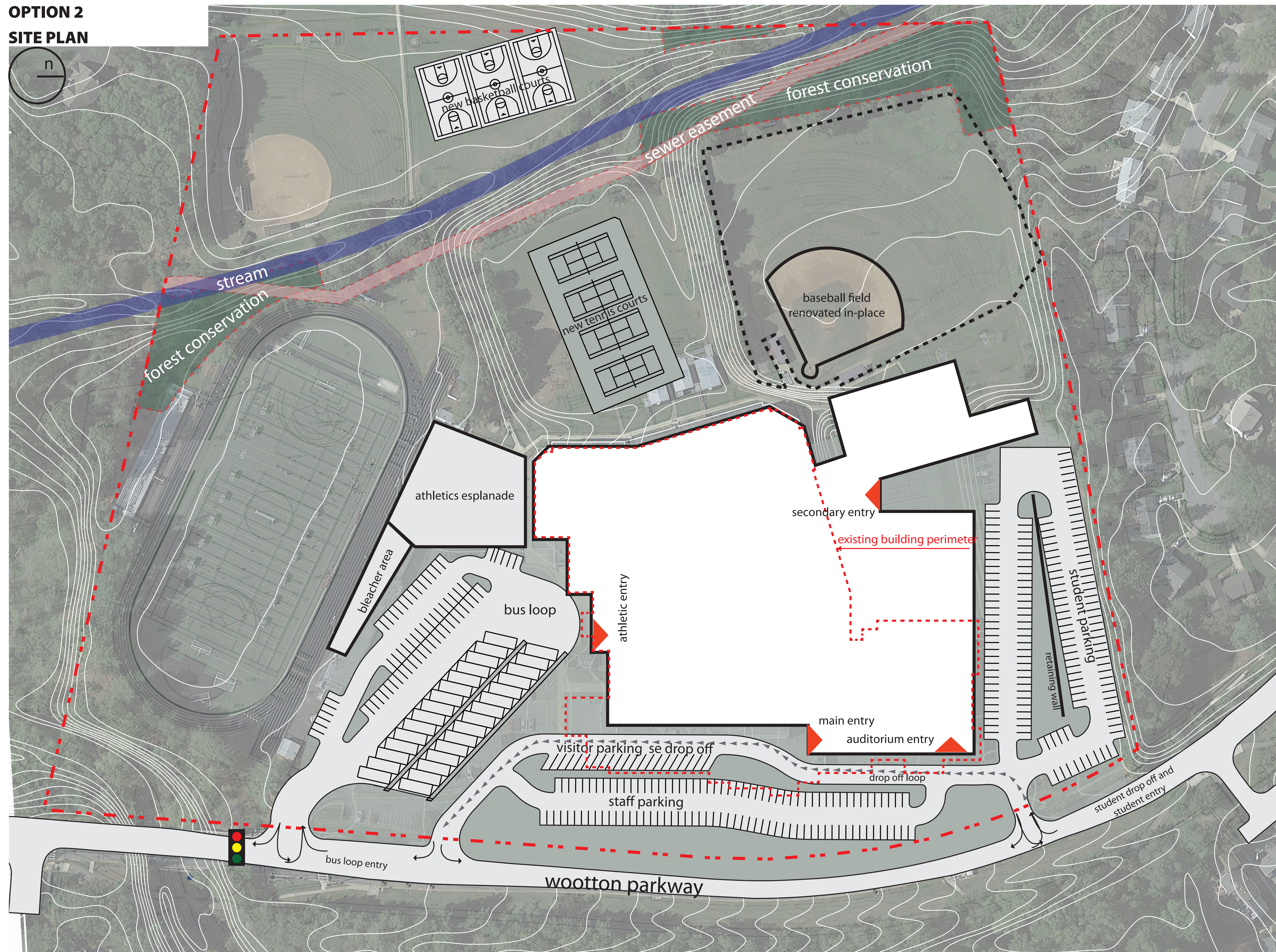
Pros

- Prominent front entry for all students
- Improved connectivity to existing stadium from school
- Ample room for new tennis courts
- Re-grading improves accessibility across the site
- Isolation of bus loop vastly improves pedestrian safety
- Flexible bus parking area allows for more parking during events

Cons

- Separation of bus loop and student parking creates a challenge for a front entry due to distance between the two functions
- Loss of student parking capacity
- Front parking area will require demolition of existing building footprint

OPTION 2 SITE PLAN



THOMAS S. WOOTTON HIGH SCHOOL SITE IMPROVEMENTS PROJECT

OPTION 2 NOTES

- Long student drop off route resulting in fewer back-ups along Wootton Parkway
- Combination of student parking and drop off that funnels to main entry at front or secondary entry at new addition
- Bus and special education drop off consolidated to the same location with shared access to main entrance
- Additional site area in front of school given to staff parking instead of buses.
- Re-graded baseball stadium to improve access
- Relocated tennis courts
- Added retaining wall in North parking lot to improve site connectivity

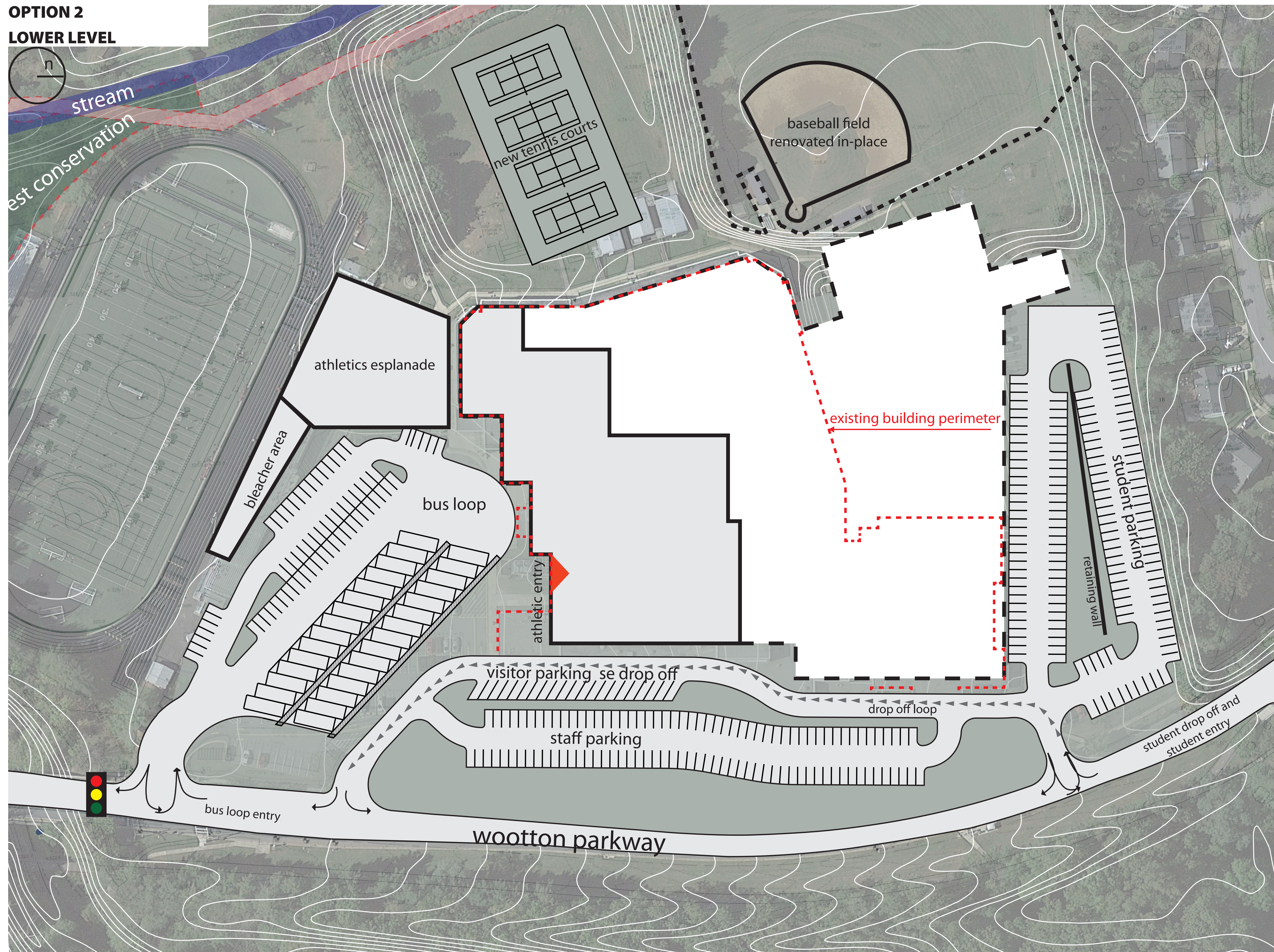
Pros

- Prominent front entry for all students
- Improved connectivity to existing stadium from school
- Ample room for new tennis courts
- Re-grading improves accessibility across the site
- Isolation of bus loop vastly improves pedestrian safety
- Flexible bus parking area allows for more parking during events

Cons

- Separation of bus loop and student parking creates a challenge for a front entry due to distance between the two functions
- Loss of student parking capacity
- Front parking area will require demolition of existing building footprint

OPTION 2 LOWER LEVEL



THOMAS S. WOOTTON HIGH SCHOOL SITE IMPROVEMENTS PROJECT

OPTION 2 NOTES

- Long student drop off route resulting in fewer back-ups along Wootton Parkway
- Combination of student parking and drop off that funnels to main entry at front or secondary entry at new addition
- Bus and special education drop off consolidated to the same location with shared access to main entrance
- Additional site area in front of school given to staff parking instead of buses.
- Re-graded baseball stadium to improve access
- Relocated tennis courts
- Added retaining wall in North parking lot to improve site connectivity

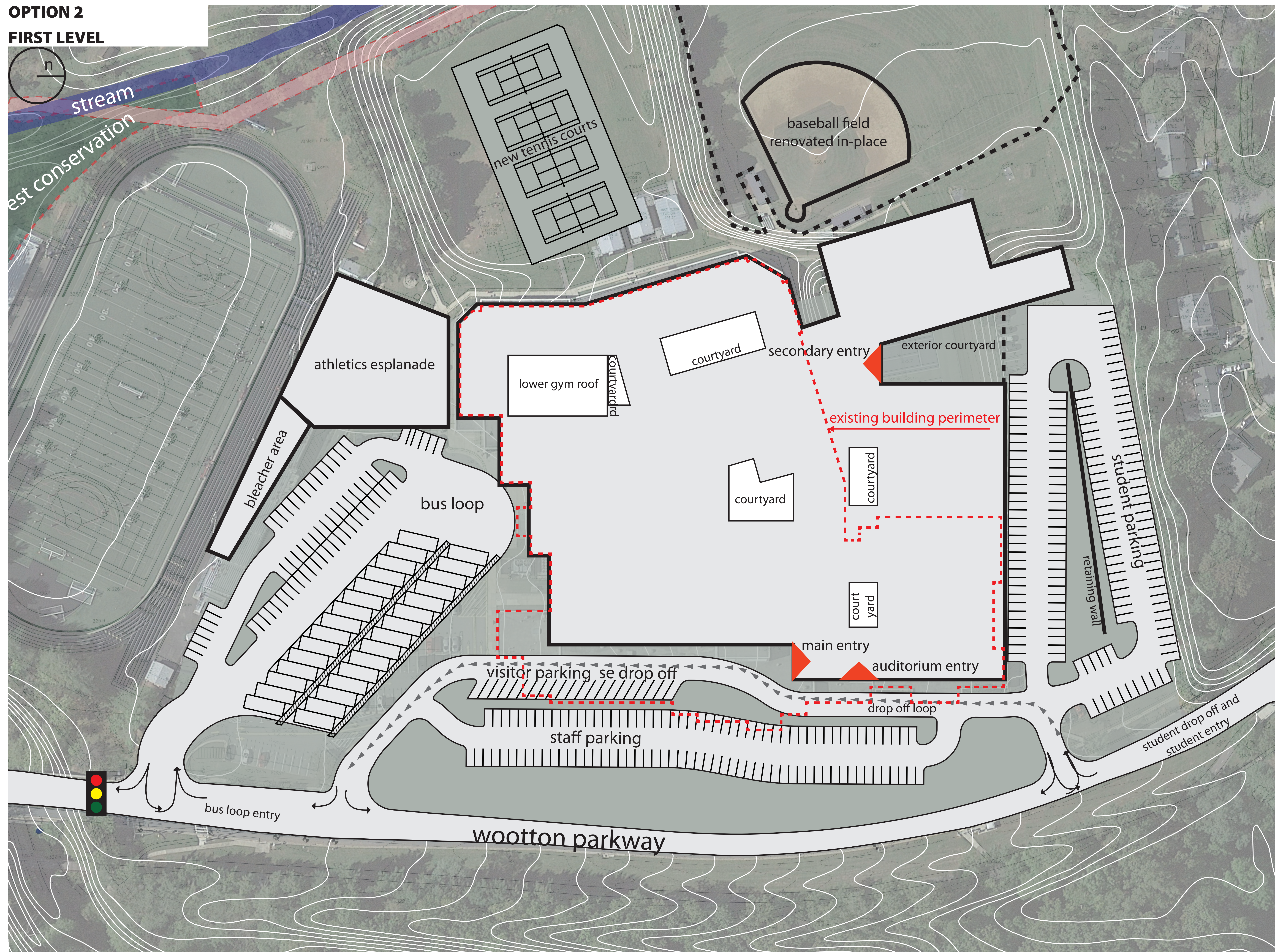
Pros

- Prominent front entry for all students
- Improved connectivity to existing stadium from school
- Ample room for new tennis courts
- Re-grading improves accessibility across the site
- Isolation of bus loop vastly improves pedestrian safety
- Flexible bus parking area allows for more parking during events

Cons

- Separation of bus loop and student parking creates a challenge for a front entry due to distance between the two functions
- Loss of student parking capacity
- Front parking area will require demolition of existing building footprint

OPTION 2 FIRST LEVEL



THOMAS S. WOOTTON HIGH SCHOOL SITE IMPROVEMENTS PROJECT

OPTION 3 NOTES

- Complete separation of two parking areas
- Separation of student from staff parking
- Main entry built in new addition along Wootton Parkway
- New addition built at NW corner
- Student drop off integrated into student parking lot
- Student drop off is located at signalized intersection to improve traffic flow
- Retaining wall at site perimeter on North side to drop parking down significantly
- Re-graded baseball stadium to improve access
- Relocated tennis courts

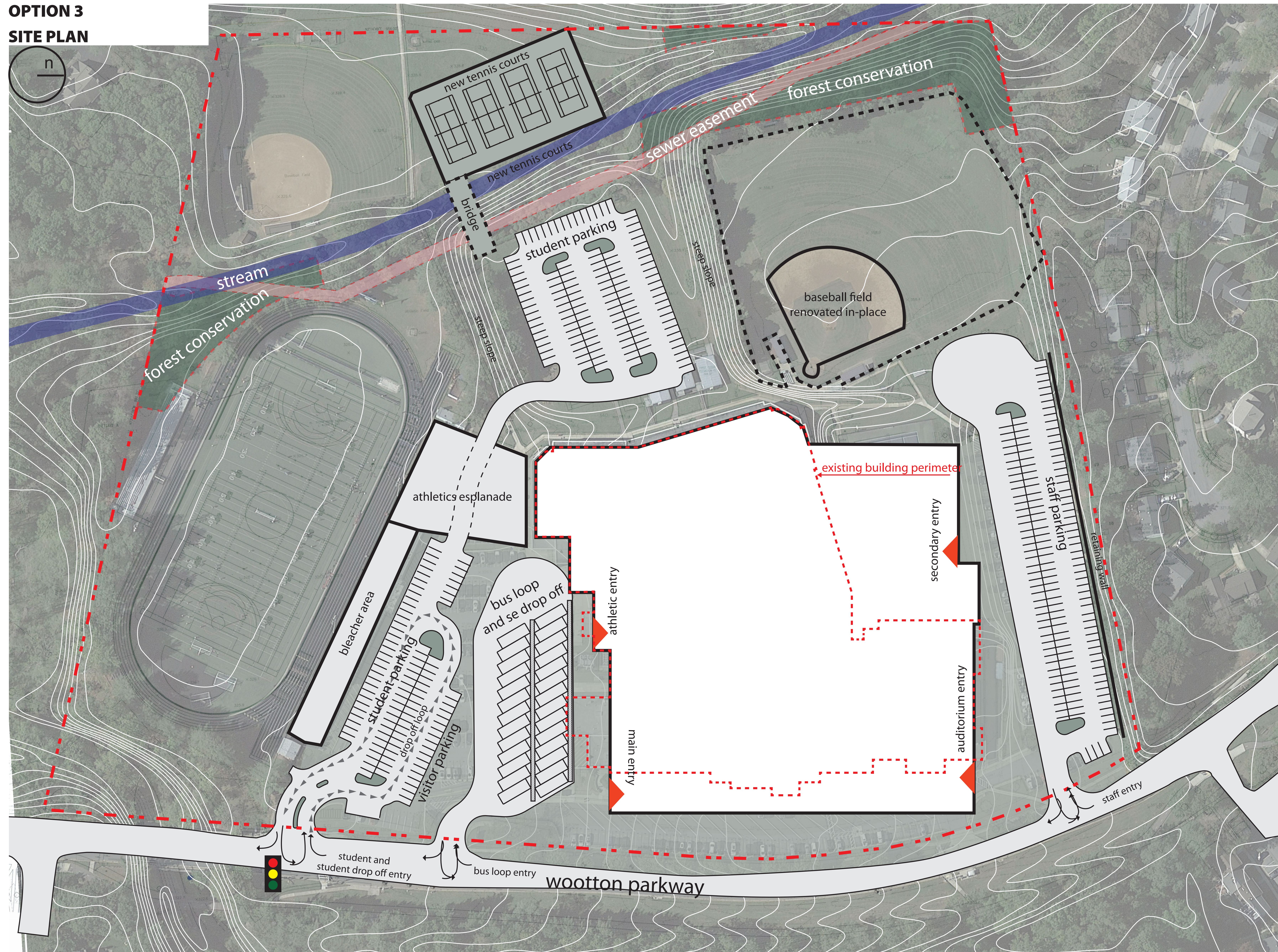
Pros

- Prominent corner entry and street presence for use by all students No parking between school and Wootton parkway
- Minimal demolition required for new parking area

Cons

- Isolated student parking lot in rear
- Must build tennis courts across stream and connect via bridge
- Loss of student parking capacity
- Connection from school to existing stadium is less prominent than other options due to crossing road for parking

OPTION 3 SITE PLAN



THOMAS S. WOOTTON HIGH SCHOOL SITE IMPROVEMENTS PROJECT

OPTION 3 NOTES

- Complete separation of two parking areas
- Separation of student from staff parking
- Main entry built in new addition along Wootton Parkway
- New addition built at NW corner
- Student drop off integrated into student parking lot
- Student drop off is located at signalized intersection to improve traffic flow
- Retaining wall at site perimeter on North side to drop parking down significantly
- Re-graded baseball stadium to improve access
- Relocated tennis courts

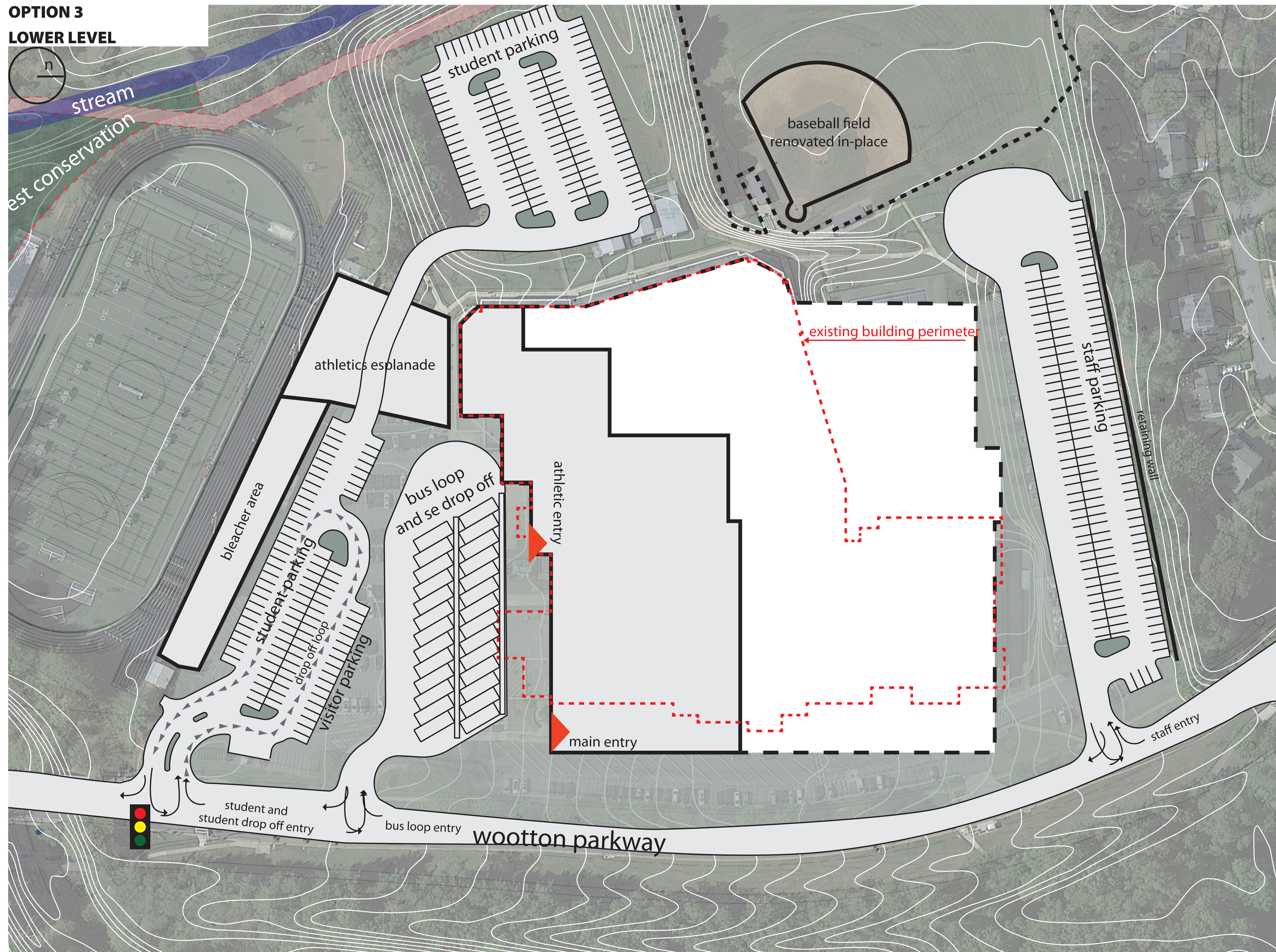
Pros

- Prominent corner entry and street presence for use by all students No parking between school and Wootton parkway
- Minimal demolition required for new parking area

Cons

- Isolated student parking lot in rear
- Must build tennis courts across stream and connect via bridge
- Loss of student parking capacity
- Connection from school to existing stadium is less prominent than other options due to crossing road for parking

OPTION 3 LOWER LEVEL



THOMAS S. WOOTTON HIGH SCHOOL SITE IMPROVEMENTS PROJECT

OPTION 3 NOTES

- Complete separation of two parking areas
- Separation of student from staff parking
- Main entry built in new addition along Wootton Parkway
- New addition built at NW corner
- Student drop off integrated into student parking lot
- Student drop off is located at signalized intersection to improve traffic flow
- Retaining wall at site perimeter on North side to drop parking down significantly
- Re-graded baseball stadium to improve access
- Relocated tennis courts

Pros

- Prominent corner entry and street presence for use by all students No parking between school and Wootton parkway
- Minimal demolition required for new parking area

Cons

- Isolated student parking lot in rear
- Must build tennis courts across stream and connect via bridge
- Loss of student parking capacity
- Connection from school to existing stadium is less prominent than other options due to crossing road for parking

OPTION 3 FIRST LEVEL

