

OCTOBER 2018

*A newsletter published by
the School Energy and
Recycling Team*

SERT Spotlight



hello fall!

AS WE SAY “GOODBYE” to the hot days of summer and “welcome” to the crisp morning temperatures and the beautiful colors of fall, there are a few important items to remember relative to recycling.

- 1** Yard waste is recyclable. So when you’re mowing the grass, raking leaves, or clearing brush, please put the yard waste in paper or clear plastic bags.
- 2** Do not put yard waste in your recycling dumpsters. Set it aside in the designated area.
- 3** Use Maximo to place a work order requesting a special pickup for the yard waste.

If you have any questions or concerns about recycling your grass, leaves, and brush, please call 240-314-4714 or email recycling@mcpsmd.org.



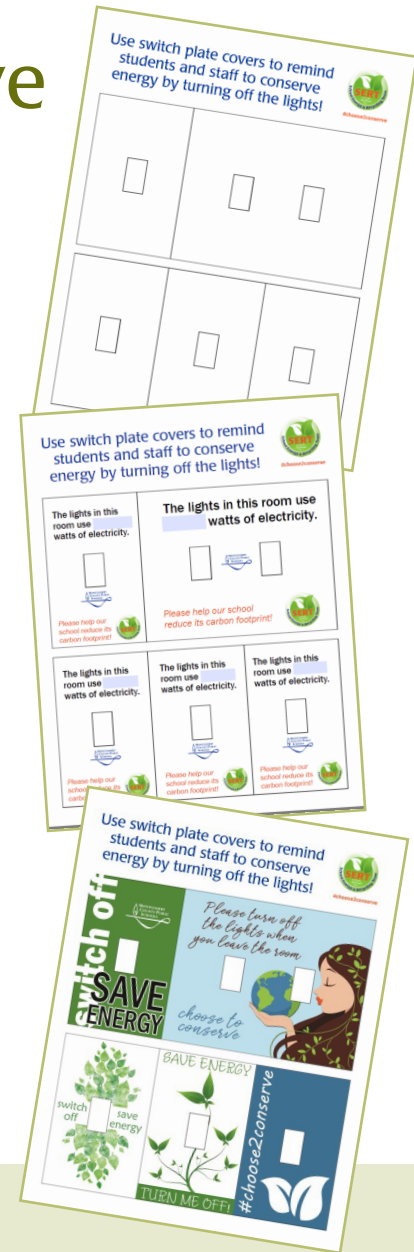
Switching Off is One Way to Save

FOR NEARLY A DECADE, one of the most popular and effective [SERT activities](#) is to have students design and decorate their classroom’s light switch cover with creative messages about energy conservation. This activity allows students to investigate their school’s energy usage, display their creativity, and put their math skills to use while having a positive impact on the planet. It’s truly a perfect STEAM activity!

We’ve recently updated our light switch cover templates and now offer three versions. One is completely [blank](#), which allows for maximum creative expression; another is a [fillable PDF](#) with space for students to type in how many watts are being used in their classroom; and one template has already been [designed](#) so it’s ready to use. All three updated templates will work to cover single, double, triple, and even motion sensor switches.

Calculating how many watts are being used in your classroom is easy. First, determine how many light tubes are in each ceiling light fixture. Most fixtures will have two, three, or four light tubes, and each tube uses 25 watts. For example, if your fixtures each have three tubes, then each fixture is using 75 watts. Next, count the number of light fixtures in the room. Lastly, multiply the number of fixtures by the number of watts being used in each, which gives you the number to put on the switch plate cover. It’s that simple!

Keep in mind that some classrooms may have had light removed from fixtures near Promethean boards, banks of windows, or other places where overhead lighting is not necessary. (This is called “[delamping](#).”) Make sure you subtract these from your calculations. If you find it difficult to see how many light tubes are in some fixtures, please ask building services staff to remove the fixture’s cover so you can see the inside.



The Green Team at Bradley Hills Elementary School did an excellent job creating switch plate covers, which they laminated to preserve. This activity, done to raise energy conservation awareness throughout their school, was highlighted in their Maryland Green Schools application.



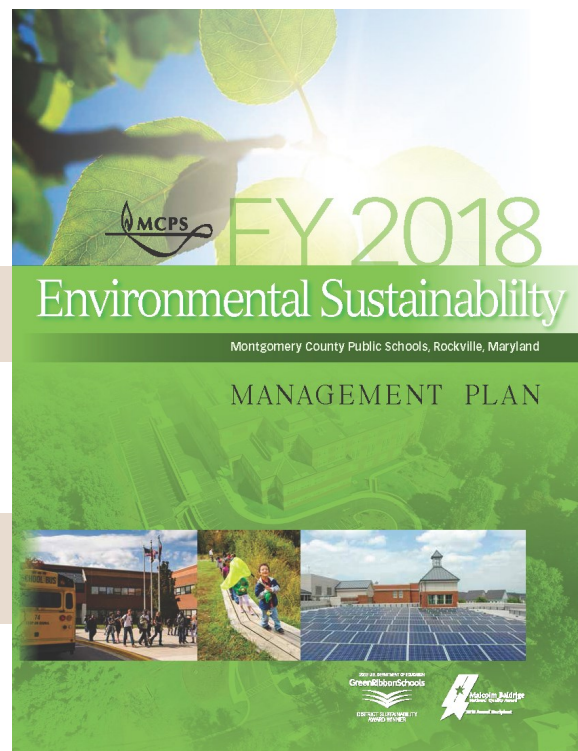
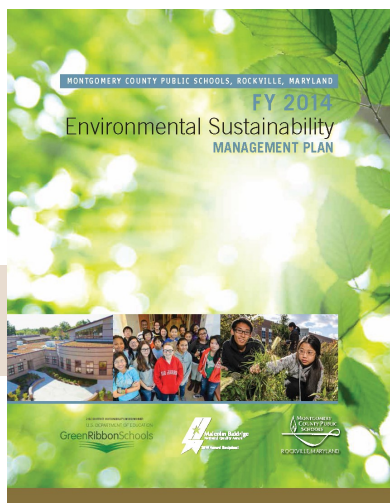
MCPS is Committed to Sustainability

IF YOU'RE ON OUR MAILING LIST or if you've visited our website, then you already know about the core functions of the School Energy and Recycling Team (SERT). We provide the resources, support, and vision for the future that will enable each Montgomery County Public School (MCPS) to develop and maintain a successful conservation program. Everything we do is to promote a culture of environmental conservation by encouraging our students and staff to conserve resources and recycle actively.

What you may not know, however, is that the SERT program and the [schools that are certified](#) as Maryland Green Schools and/or schools that received the National Green Ribbon School Award aren't the only "green" aspects of MCPS. Montgomery County Public Schools has a strong commitment to responsible environmental stewardship that began back in the 1970's when MCPS' first energy policy and program was formed.

Over the past 40 years, MCPS has become a national leader in sustainability and environmental stewardship by making significant progress in the areas of resource conservation, materials and waste cycles, transportation, building construction and maintenance, and information technology. As a result, MCPS has conserved significant amounts of energy and resources, thereby saving our school system millions of dollars by simply being more efficient. We have also built a world-class education for sustainability into our curriculum and programs so that our students are equipped with skills, knowledge, and a strong ethic of environmental sustainability.

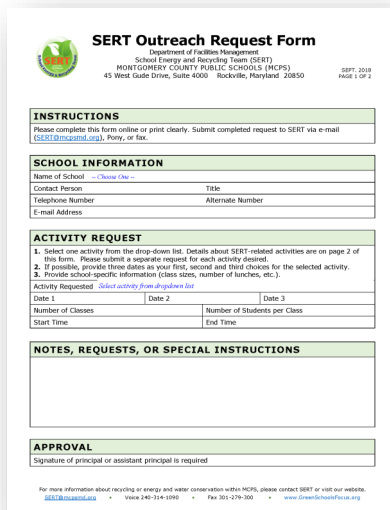
At the end of [FY2014](#), the inaugural edition of the Environmental Sustainability Management Plan (ESMP) was published. The ESMP was updated at the end of [FY2016](#) and again just recently at the end of [FY2018](#), detailing the various plans, progress, and programs that are in place to continue our legacy of conservation. With information on everything from student activities to how the school buses are routed to maximize fuel efficiency, the ESMP provides a wealth of information about MCPS' continued commitment to environmental sustainability. If you haven't yet read the recent edition of the ESMP, click on the images below and review the progress we've made. We believe you'll find it to be quite informative.



Invite Us to Your School

SERT STAFF are ready to assist you with your conservation and recycling efforts. Use our recently updated [Outreach Request](#) form to schedule an energy and recycling awareness assembly, where your students learn why conservation is important; “Lunch and Learn,” a lunchtime hands-on recycling training event; or have our program staff visit your classroom to read about conservation.

Our staff are also available to demonstrate how to use energy analysis tools to measure foot candles, temperature, and watts; and to help students understand how to conserve energy.



SERT Outreach Request Form
 Department of Facilities Management
 School Energy and Recycling Team (SERT)
 MONTGOMERY COUNTY PUBLIC SCHOOLS (MCPS)
 45 West Gude Drive, Suite 4000 Rockville, Maryland 20850

SERT-2018
Page 1 of 2

INSTRUCTIONS
 Please complete this form online or print clearly. Submit completed request to SERT via e-mail (CSERT@mcpsmd.org), Pony, or fax.

SCHOOL INFORMATION

Name of School	- Choose One -		
Contact Person	Title		
Telephone Number	Alternate Number		
E-mail Address			

ACTIVITY REQUEST

- Select one activity from the drop-down list. Details about SERT-related activities are on page 2 of this form. Please submit a separate request for each activity desired.
- If possible, provide three dates as your first, second and third choices for the selected activity.
- Provide school-specific information (class size, number of lunches, etc.)

Activity Requested: *Select activity from drop-down list*

Date 1	Date 2	Date 3
Number of Classes	Number of Students per Class	
Start Time	End Time	

NOTES, REQUESTS, OR SPECIAL INSTRUCTIONS

APPROVAL
 Signature of principal or assistant principal is required

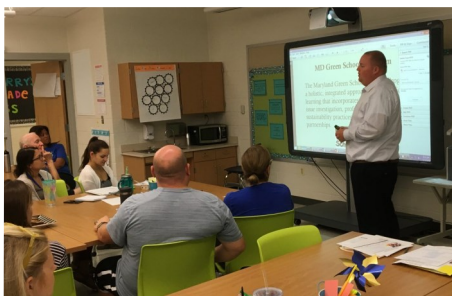
For more information about recycling or energy and water conservation within MCPS, please contact SERT or visit our website.
CSERT@mcpsmd.org • [301.279.1090](tel:3012791090) • [301.279.3005](tel:3012793005) • www.greenschoolsfocus.org

This newsletter is produced by the School Energy and Recycling Team (SERT) program and distributed to school-based SERT leaders and teams, building service personnel, and others who are interested in conservation and sustainability.

As part of the [Montgomery County Public Schools](#) Department of Facilities Management, the SERT program provides opportunities for all schools to participate and receive incentives and recognition for their energy conservation and recycling efforts.

The SERT program supports a balanced environment for the integration of all students to work together in a culturally diverse environment. Our goal is to provide the resources, support, and vision of the future for a successful conservation program at each school. Promoting the connections between human behavior and its impact on the environment reinforces our culture of conservation and increases participation in our mission to conserve resources and recycle actively.

CLASSROOM READ ALOUDS AND ENERGY/RECYCLING ASSEMBLIES



MEETINGS WITH SCHOOL-BASED SERT TEAMS AND STAFF



SERT PROGRAM

Montgomery County Public Schools
 Department of Facilities Management
 45 W. Gude Drive, Suite 4000
 Rockville, MD 20850
www.GreenSchoolsFocus.org
 Main: 240.314.1090
 Fax: 301.279.3005
SERT@mcpsmd.org
 @MCPSSert