

Richard Montgomery Elementary School #5 Boundary Advisory Committee Meeting 3

April 5, 2017

www.montgomeryschoolsmd.org/departments/planning/rmes.aspx



Agenda

- Review feedback from meeting 2.
- Review follow up materials.
- Review boundary options
- Discuss boundary options.
- Discuss next steps and fill out feedback forms.
- Address questions and comments from observers.

Ground Rules

1. Be true to the charge
2. Share openly
3. Participate enthusiastically
4. Give and receive constructive feedback
5. Appreciate everyone's ideas
6. Suspend judgment
7. Limit discussions to the topic
8. Do homework and be prepared
9. Abide by decisions made by the facilitators
10. Turn off cell phones, set to vibrate, or answer on first ring
11. Start and end meetings on time
12. Step up, step back.

Meeting 2 Feedback

This session was most helpful at:

- ✓ Laying out the options
- ✓ Explaining changes
- ✓ Explaining the zone map
- ✓ Showing zones and boundaries

This session was least helpful at:

- Providing numbers for each zone
- Showing impact of development- past and present
- Rationale behind the options
- More of a written summary of the options

Suggestions for future sessions:

- Provide materials and numbers of students
- Show development
- Come prepared with summaries in writing

Follow Ups Requested by Committee

- Post information to website
- Specific development yields and projection accuracy for pupil generation rates
- Suggested modifications to zones
- Developments by zone
- Transportation information

Yields

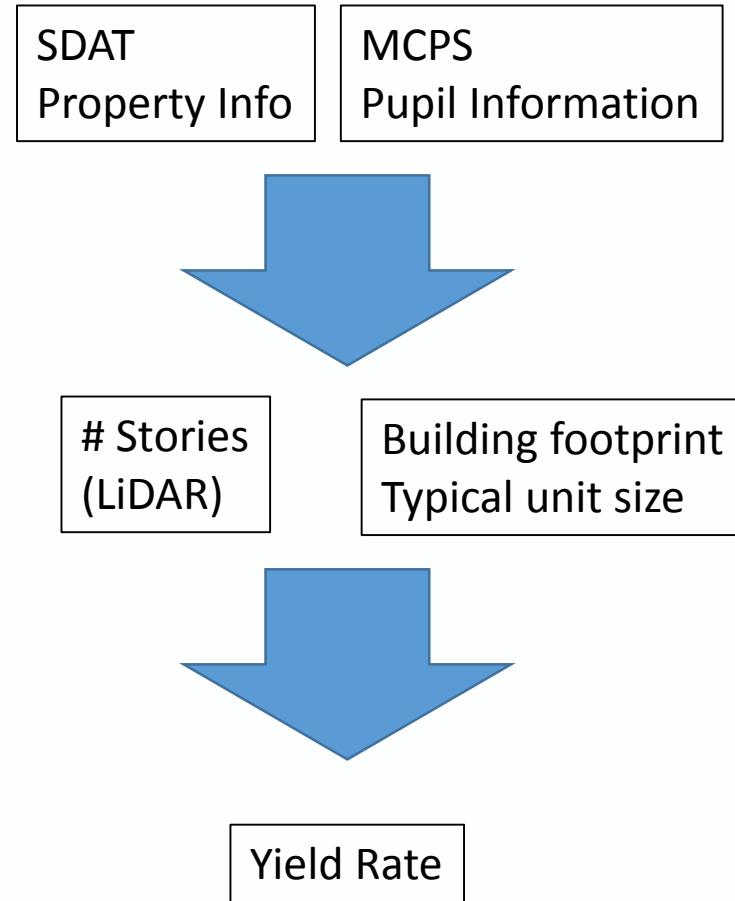
June 20, 2016

Upcounty (3)	Factors (number of students generated per unit)			
	Elementary	Middle	High	Total (K-12)
Single Family Detached *	0.427	0.167	0.174	0.769
Single Family Attached *	0.209	0.078	0.091	0.378
Single Family Detached **	0.215	0.122	0.169	0.506
Single Family Attached **	0.253	0.115	0.149	0.517
Multi-Family Low to Med Rise *	0.073	0.025	0.035	0.134
Multi-Family High Rise *	0.106	0.052	0.066	0.223
Multi-Family Low to Med Rise **	0.193	0.070	0.090	0.352
Multi-Family High Rise **	0.084	0.037	0.050	0.171

County-Wide	Factors (number of students generated per unit)			
	Elementary	Middle	High	Total (K-12)
Single Family Detached *	0.358	0.152	0.157	0.667
Single Family Attached *	0.193	0.075	0.090	0.358
Single Family Detached **	0.205	0.109	0.148	0.463
Single Family Attached **	0.234	0.107	0.143	0.484
Multi-Family Low to Med Rise *	0.071	0.025	0.039	0.135
Multi-Family High Rise *	0.038	0.014	0.015	0.067
Multi-Family Low to Med Rise **	0.203	0.079	0.103	0.385
Multi-Family High Rise **	0.071	0.029	0.038	0.139

* Residential structure built between 2006 and 2015

** Residential structure built any year



Yields



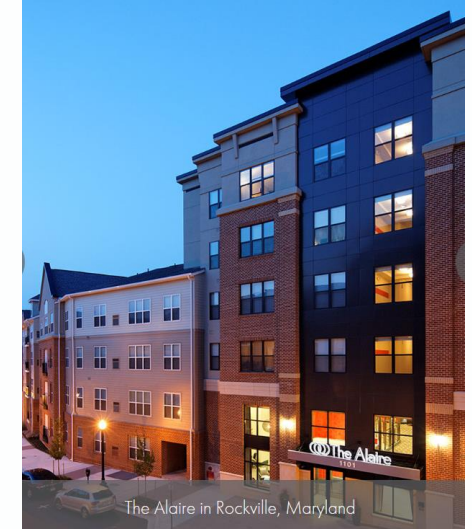
Congressional Villages
198 Halpine
Yield 0.093 ES per unit

Countywide 0.203
Upcounty 0.193



Congressional Towers
Congressional Lane
Yield 0.171 ES per unit

Countywide 0.071
Upcounty 0.084



The Alaire
1101 Higgins Place
Yield 0.026 ES per unit

Countywide 0.071
Upcounty 0.084

Development

Anticipated in six year CIP period

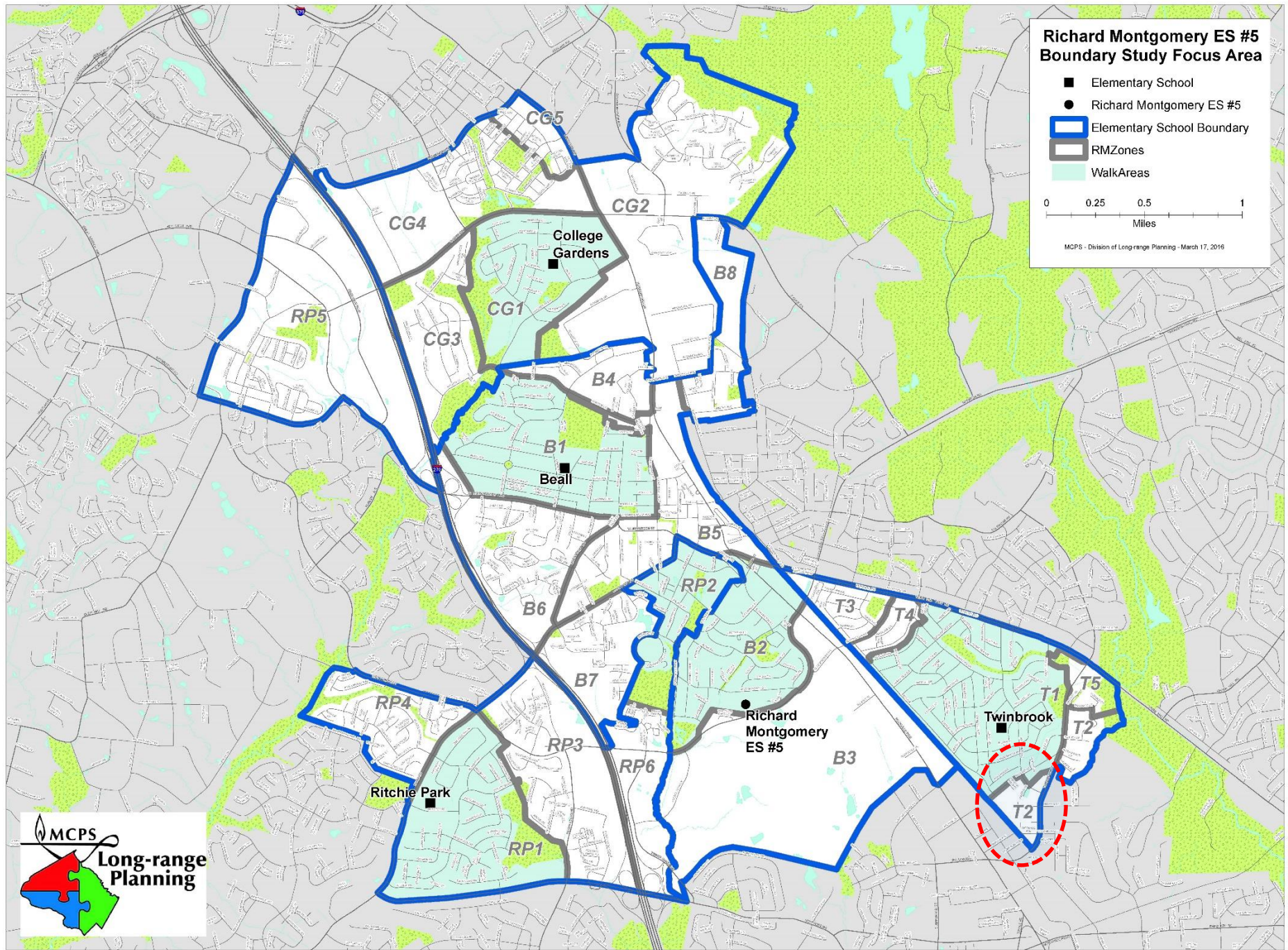
School and Zones	Housing Developments	Planned Units	Rate	Potential ES
Beall				
B5	41 Maryland Ave	117 MFHR	0.084	10
B5	Duball Phase II (Rockville Town Center)	400 MFHR	0.084	34
B5	Kettler (The Metropolitan)	275 MFHR	0.084	23
B5	Tower Oaks SFD	30SF	0.215	6
B3	Tower Oaks (Preserve Pkwy) Towns	225 TH	0.253	57
B3	Tower Oaks (Preserve Pkwy) Apt	120 MFHR	0.084	10
B5	Upton & Cambria (Duball 196 Phase 1)	Occupied	0.084	22
College Gardens				
CG 4	Quality Suites/Flats Shady Grove	Occupied	0.052	11
CG 4	Rockville Mews 83 Towns	Resubmittal	0.253	15
Ritchie Park				
RP3	Park Potomac (Fortune Parc) Towns	Occupied	0.253	38
RP3	Park Potomac (Fortune Parc) Apt	Occupied	0.084	38
Twinbrook				
T1	Avalon Bay Twinbrook Station	240 MF high rise	0.084	20

Number of Students per Zone

- Some zones may contain numbers of students that are smaller than 5 which could identify individual students. By law, MCPS may not release data that could identify individual students to community members to protect the identity of those students.
- As described in Regulation *FAA-RA Long-range Educational Facilities Planning*, the role of the committee members is to develop criteria to assist MCPS staff in the development of the options.
- If committee members were provided zone data, committee members would have the ability to develop options which is outside the scope of the committee member role as described in regulation FAA-RA.

Transportation information

Option	Zone	Current Bus Time	Proposed Bus Time		Option	Zone	Current Bus Time	Proposed Bus Time
1	B3	9	5		3	B3	9	5
1	B7	9	12		3	B7	9	12
1	RP6	7	5		3	RP6	7	5
1	T3	12	11		3	T2	5	10
1	CG3	6	6		3	T2	9	14
2	B3	9	5		3	CG3	6	6
2	B7	9	12		4	B3	9	5
2	RP6	7	5		4	B5	12	13
2	CG3	6	6		4	B6	10	15
					4	CG2	8	11



Committee Criteria

- Minimize splits to community identity, subdivisions, and civic association areas
- Minimize travel time
- Keep schools below 100% utilization and eliminate relocatable classrooms
- Give consideration to community support mechanisms such as community centers
- Promote a diverse student body
- Minimize relocation of students out of their home school
- Reserve space and room for growth for approved plan development
- Consider overcapacity at schools with future shell build out capability
- Minimize a domino effect
- Maximize walkers
- Minimize displacement of home school students by the Chinese Immersion program
- Consider stability of school assignments over time for immersion students

Option # 1

B2, B3, and B7 from Beall Elementary to Richard Montgomery Cluster Elementary #5.

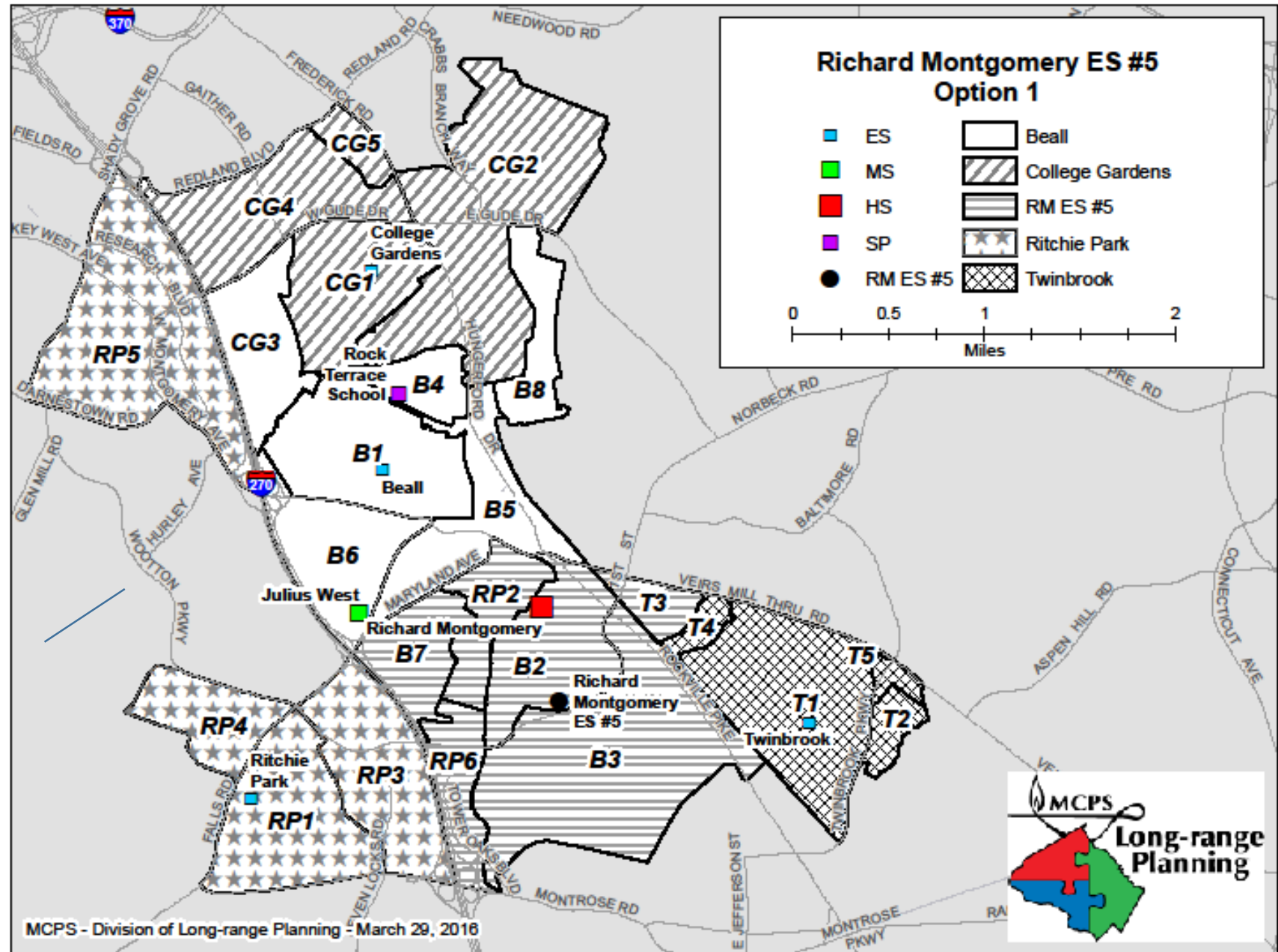
CG3 from College Gardens Elementary to Beall Elementary.

Chinese Immersion is moved from College Gardens Elementary to Richard Montgomery Cluster Elementary #5.

RP2 and RP6 from Ritchie Park Elementary to Richard Montgomery Cluster Elementary #5.

T3 from Twinbrook Elementary to Richard Montgomery Cluster Elementary # 5.

- B2, B3, and B7 from Beall to RM ES #5.
- CG3 from College Gardens to Beall.
- Chinese Immersion is moved from College Gardens to RM ES #5.
- RP2 and RP6 from Ritchie Park to RM ES #5.
- T3 from Twinbrook to RM ES #5.



Option 1

	Projected Number of Students						2016–2017						
	2017–2018	Boundary Implement ed 2018–2019	2019–2020	2020–2021	2021–2022	2022–2023	Race/Ethnic Composition						
							% Afr. Amer.	% Asian	% Hispanic	% White	% 2 or More	% FARMS	% ESOL
Beall Elementary School													
Maximum Number of Seats = 638													
<u>No Change:</u>													
Number of Students	813	849	855	865	872	871							
<i>Percent of Building Occupied</i>	127%	133%	134%	136%	137%	137%	12.1%	24.1%	22.0%	35.4%	6.4%	25.0%	15.4%
<i>Available Seats</i>	(175)	(211)	(217)	(227)	(234)	(233)							
Reassign zones B2, B3, and B7 to Richard Montgomery Cluster ES #5. Zone CG3 received from College Gardens ES.													
<u>With Change:</u>													
Number of Students	813	643	659	660	676	703							
<i>Percent of Building Occupied</i>	127%	101%	103%	103%	106%	110%	13.6%	17.4%	17.9%	42.7%	8.5%	18.2%	12.0%
<i>Available Seats</i>	(175)	(5)	(21)	(22)	(38)	(65)							

Option 1

	Projected Number of Students						2016-2017						
	2017-2018	Boundary Implement ed 2018-2019	2019-2020	2020-2021	2021-2022	2022-2023	Race/Ethnic Composition						
							% Afr. Amer.	% Asian	% Hispanic	% White	% 2 or More	% FARMS	% ESOL
College Gardens Elementary School													
Maximum Number of Seats= 693													
<u>No Change:</u>													
Number of Students	879	881	851	848	839	846							
<i>Percent of Building Occupied</i>	<i>127%</i>	<i>127%</i>	<i>123%</i>	<i>122%</i>	<i>121%</i>	<i>122%</i>	<i>17.9%</i>	<i>22.2%</i>	<i>14.4%</i>	<i>38.2%</i>	<i>7.3%</i>	<i>14.5%</i>	
<i>Available Seats</i>	<i>(186)</i>	<i>(188)</i>	<i>(158)</i>	<i>(155)</i>	<i>(146)</i>	<i>(153)</i>						<i>14.8%</i>	
Zone CG3 is reassigned to Beall ES. Chinese Immersion is moved to Richard Montgomery Cluster ES #5.													
<u>With Change:</u>													
Number of Students	879	650	649	662	658	653							
<i>Percent of Building Occupied</i>	<i>127%</i>	<i>94%</i>	<i>94%</i>	<i>96%</i>	<i>95%</i>	<i>94%</i>	<i>18.4%</i>	<i>24.0%</i>	<i>14.9%</i>	<i>35.4%</i>	<i>7.3%</i>	<i>16.2%</i>	
<i>Available Seats</i>	<i>(186)</i>	<i>43</i>	<i>44</i>	<i>31</i>	<i>35</i>	<i>40</i>						<i>19.4%</i>	

Option 1

	Projected Number of Students						2016–2017						
	2017–2018	Boundary Implemented 2018–2019	2019–2020	2020–2021	2021–2022	2022–2023	Race/Ethnic Composition						
							% Afr. Amer.	% Asian	% Hispanic	% White	% 2 or More	% FARMS	% ESOL
Richard Montgomery Cluster ES #5													
Maximum Number of Seats= 602 <u>No Change:</u> Number of Students <i>Percent of Building Occupied</i> Available Seats			New School Opens 0										
		0	0	0	0	0							
		0%	0%	0%	0%	0%							
		602	602	602	602	602							
Richard Montgomery Cluster ES #5 attending area is comprised of RP2, RP6, B2, B3, B7, T3, and Chinese Immersion <u>With Change:</u> Number of Students <i>Percent of Building Occupied</i> Available Seats													
	0	574	590	594	582	596							
	0%	95%	98%	99%	97%	99%	10.2%	30.4%	28.7%	26.2%	< 5 %	29.7%	19.8%
	0	28	12	8	20	6							

Option 1

	Projected Number of Students						2016–2017						
	2017–2018	Boundary Implement ed 2018–2019	2019–2020	2020–2021	2021–2022	2022–2023	Race/Ethnic Composition						
							% Afr. Amer.	% Asian	% Hispanic	% White	% 2 or More	% FARMS	% ESOL
Ritchie Park Elementary School													
Maximum Number of Seats= 387													
<u>No Change:</u>													
Number of Students	506	514	501	490	503	501							
<i>Percent of Building Occupied</i>	131%	133%	129%	127%	130%	129%	12.6%	22.2%	18.1%	41.1%	5.9%	23.0%	
<i>Available Seats</i>	(119)	(127)	(114)	(103)	(116)	(114)						11.3%	
<u>With Change:</u>													
Reassign zones RP2 and RP6 to Richard Montgomery Cluster ES #5.													
Number of Students	506	373	379	375	379	379							
<i>Percent of Building Occupied</i>	131%	96%	98%	97%	98%	98%	10.5%	19.6%	12.3%	50.5%	7.1%	11.9%	
<i>Available Seats</i>	(119)	14	8	12	8	8						6.9%	

Option 1

	Projected Number of Students						2016-2017						
	2017-2018	Boundary Implement ed 2018-2019	2019-2020	2020-2021	2021-2022	2022-2023	Race/Ethnic Composition						
							% Afr. Amer.	% Asian	% Hispanic	% White	% 2 or More	% FARMS	% ESOL
Twinbrook Elementary School													
Maximum Number of Seats= 553													
<u>No Change:</u>													
Number of Students	575	593	587	599	596	581							
<i>Percent of Building Occupied</i>	104%	107%	106%	108%	108%	105%	10.7%	13.5%	61.0%	11.4%	< 5 %	68.7%	50.1%
<i>Available Seats</i>	(22)	(40)	(34)	(46)	(43)	(28)							
Reassign zone T3 to Richard Montgomery Cluster ES # 5.													
<u>With Change:</u>													
Number of Students	575	513	506	512	514	523							
<i>Percent of Building Occupied</i>	104%	93%	92%	93%	93%	95%	11.2%	13.6%	60.9%	10.3%	< 5 %	60.1%	45.0%
<i>Available Seats</i>	(22)	40	47	41	39	30							

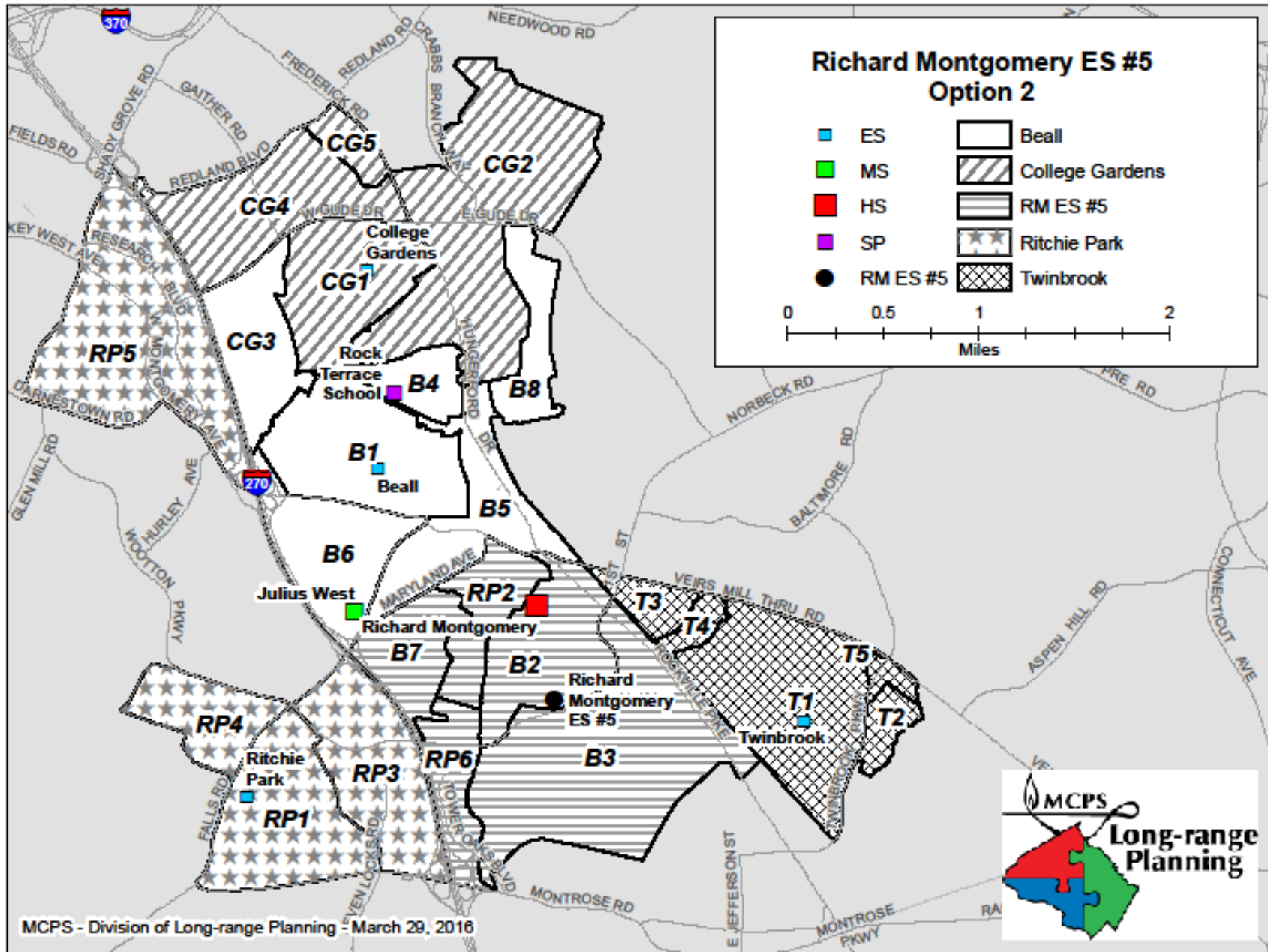
Option # 2 B2, B3, and B7 from Beall Elementary to Richard Montgomery Cluster Elementary #5.

CG3 is reassigned from College Gardens Elementary to Beall Elementary.

Chinese Immersion is moved from College Gardens Elementary to Richard Montgomery Cluster Elementary #5.

RP2 and RP6 from Ritchie Park Elementary to Richard Montgomery Cluster Elementary #5.

- B2, B3, and B7 from Beall Elementary to Richard Montgomery Cluster Elementary #5.
- CG3 is reassigned from College Gardens Elementary to Beall Elementary.
- Chinese Immersion is moved from College Gardens Elementary to Richard Montgomery Cluster Elementary #5.
- RP2 and RP6 from Ritchie Park Elementary to Richard Montgomery Cluster Elementary #5.



Option 2

	Projected Number of Students						2016–2017						
	Boundary Implement ed	2017–2018	2018–2019	2019–2020	2020–2021	2021–2022	2022–2023	Race/Ethnic Composition					
								% Afr. Amer.	% Asian	% Hispanic	% White	% 2 or More	% FARMS
Beall Elementary School													
Maximum Number of Seats = 638													
<u>No Change:</u>													
Number of Students	813	849	855	865	872	871							
<i>Percent of Building Occupied</i>	127%	133%	134%	136%	137%	137%	12.1%	24.1%	22.0%	35.4%	6.4%	25.0%	15.4%
Available Seats	(175)	(211)	(217)	(227)	(234)	(233)							
Reassign zones B2, B3, and B7 to Richard Montgomery Cluster ES #5. Zone CG3 is received from College Gardens ES.													
<u>With Change:</u>													
Number of Students	813	643	659	660	676	703							
<i>Percent of Building Occupied</i>	127%	101%	103%	103%	106%	110%	13.6%	17.4%	17.9%	42.7%	8.5%	18.2%	12.0%
Available Seats	(175)	(5)	(21)	(22)	(38)	(65)							

Option 2

	Projected Number of Students						2016–2017						
	2017–2018	Boundary Implemented 2018–2019	2019–2020	2020–2021	2021–2022	2022–2023	Race/Ethnic Composition						
							% Afr. Amer.	% Asian	% Hispanic	% White	% 2 or More	% FARMS	% ESOL
College Gardens Elementary School													
Maximum Number of Seats= 693													
<u>No Change:</u>													
Number of Students	879	881	851	848	839	846							
<i>Percent of Building Occupied</i>	127%	127%	123%	122%	121%	122%	17.9%	22.2%	14.4%	38.2%	7.3%	14.5%	14.8%
<i>Available Seats</i>	(186)	(188)	(158)	(155)	(146)	(153)							
Zone CG3 is reassigned to Beall ES. Chinese Immersion is moved to Richard Montgomery Cluster ES #5.													
<u>With Change:</u>													
Number of Students	879	650	649	662	658	653							
<i>Percent of Building Occupied</i>	127%	94%	94%	96%	95%	94%	18.4%	24.0%	14.9%	35.4%	7.3%	16.2%	19.4%
<i>Available Seats</i>	(186)	43	44	31	35	40							

Option 2

	Projected Number of Students					2016–2017								
	2017–2018	Boundary Implemented	2018–2019	2019–2020	2020–2021	2021–2022	2022–2023	Race/Ethnic Composition					FARMS	ESOL
								% Afr. Amer.	% Asian	% Hispanic	% White	% 2 or More		
Richard Montgomery Cluster ES #5														
Maximum Number of Seats = 602														
<u>No Change:</u>														
Number of Students			New School Opens											
<i>Percent of Building Occupied</i>			0	0	0	0	0							
Available Seats			0%	0%	0%	0%	0%							
			602	602	602	602	602							
Richard Montgomery Cluster ES #5 attending area is comprised of RP2, RP6, B2, B3, B7, and Chinese Immersion.														
<u>With Change:</u>														
Number of Students			530	542	549	536	550							
<i>Percent of Building Occupied</i>			88%	90%	91%	89%	91%	11.9%	33.2%	22.5%	26.8%	5.7%	29.9%	
Available Seats			72	60	53	66	52					19.6%		

Option 2

	Projected Number of Students						2016–2017						
	2017–2018	Boundary Implement ed	2018–2019	2019–2020	2020–2021	2021–2022	2022–2023	Race/Ethnic Composition					
								% Afr. Amer.	% Asian	% Hispanic	% White	% 2 or More	% FARMS
Ritchie Park Elementary School													
Maximum Number of Seats= 387													
<u>No Change:</u>													
Number of Students	506		514	501	490	503	501						
<i>Percent of Building Occupied</i>	131%		133%	129%	127%	130%	129%	12.6%	22.2%	18.1%	41.1%	5.9%	23.0%
<i>Available Seats</i>	(119)		(127)	(114)	(103)	(116)	(114)						11.3%
Reassign zones RP2 and RP6 to Richard Montgomery Cluster ES #5.													
<u>With Change:</u>													
Number of Students	506		373	379	375	379	379						
<i>Percent of Building Occupied</i>	131%		96%	98%	97%	98%	98%	10.5%	19.6%	12.3%	50.5%	7.1%	11.9%
<i>Available Seats</i>	(119)		14	8	12	8	8						6.9%

Option 2

	Projected Number of Students						2016–2017						
	2017–2018	Boundary Implemented 2018–2019	2019–2020	2020–2021	2021–2022	2022–2023	Race/Ethnic Composition						
							% Afr. Amer.	% Asian	% Hispanic	% White	% 2 or More	% FARMS	% ESOL
Twinbrook Elementary School													
Maximum Number of Seats= 553													
<u>No Change:</u>													
Number of Students	575	593	587	599	596	581							
<i>Percent of Building Occupied</i>	<i>104%</i>	<i>107%</i>	<i>106%</i>	<i>108%</i>	<i>108%</i>	<i>105%</i>	<i>10.7%</i>	<i>13.5%</i>	<i>61.0%</i>	<i>11.4%</i>	<i>< 5%</i>	<i>68.7%</i>	
<i>Available Seats</i>	<i>(22)</i>	<i>(40)</i>	<i>(34)</i>	<i>(46)</i>	<i>(43)</i>	<i>(28)</i>						<i>50.1%</i>	
<u>No Boundary Change</u>													
<u>With Change:</u>													
Number of Students	575	593	587	599	596	581							
<i>Percent of Building Occupied</i>	<i>104%</i>	<i>107%</i>	<i>106%</i>	<i>108%</i>	<i>108%</i>	<i>105%</i>	<i>10.7%</i>	<i>13.5%</i>	<i>61.0%</i>	<i>11.4%</i>	<i>< 5%</i>	<i>68.7%</i>	
<i>Available Seats</i>	<i>(22)</i>	<i>(40)</i>	<i>(34)</i>	<i>(46)</i>	<i>(43)</i>	<i>(28)</i>						<i>50.1%</i>	

Option # 3

B2, B3, and B7 from Beall Elementary to Richard Montgomery Cluster Elementary #5.

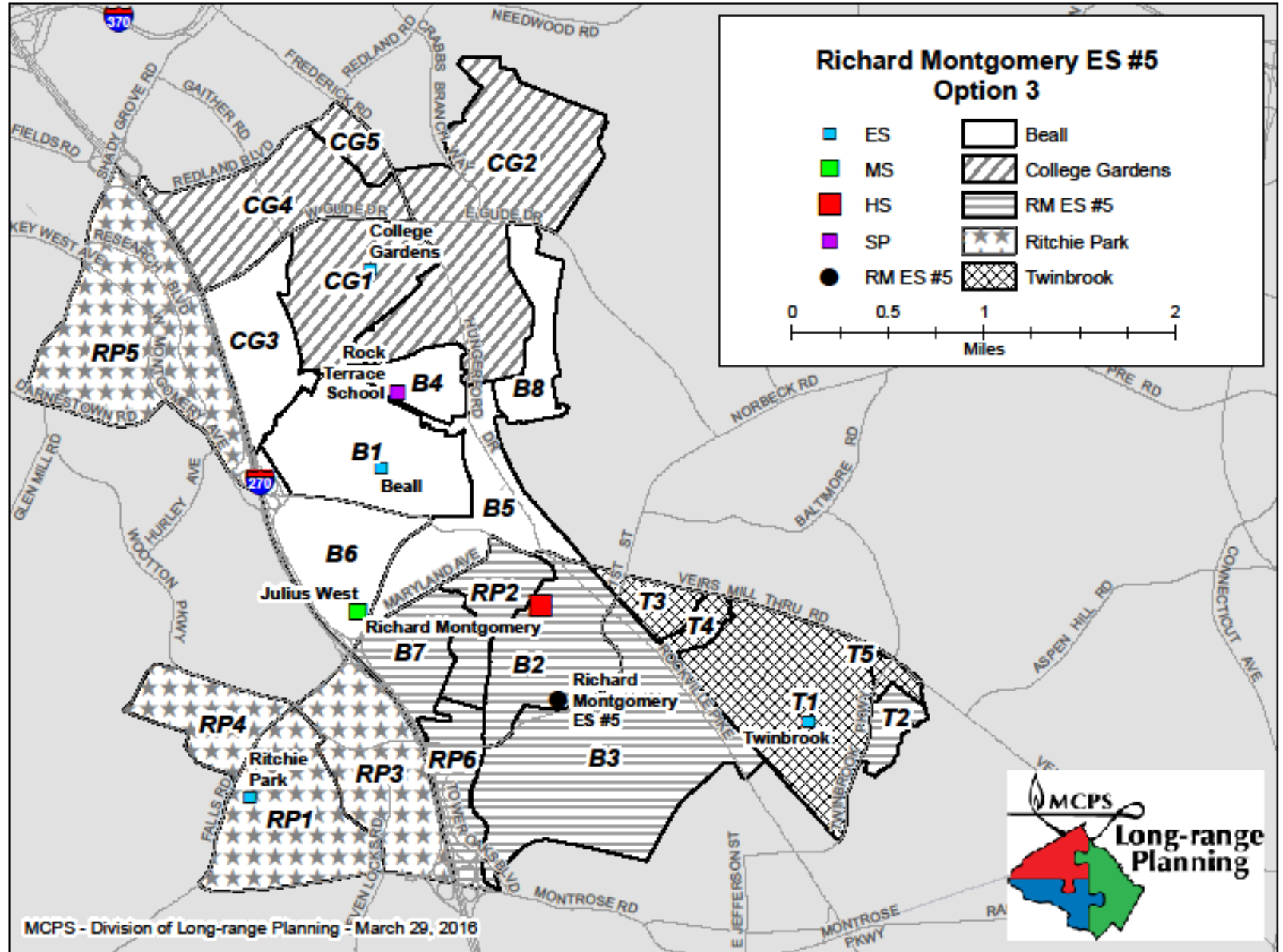
CG3 is reassigned from College Gardens Elementary to Beall Elementary.

Chinese Immersion is moved from College Gardens Elementary to Twinbrook ES.

RP2 and RP6 from Ritchie Park Elementary to Richard Montgomery Cluster Elementary #5.

T2 from Twinbrook Elementary to Richard Montgomery Cluster Elementary # 5.

- B2, B3, and B7 from Beall Elementary to Richard Montgomery Cluster Elementary #5.
- CG3 is reassigned from College Gardens Elementary to Beall Elementary.
- Chinese Immersion is moved from College Gardens Elementary to Twinbrook ES.
- RP2 and RP6 from Ritchie Park Elementary to Richard Montgomery Cluster Elementary #5.
- T2 from Twinbrook Elementary to Richard Montgomery Cluster Elementary # 5.



Option 3

	Projected Number of Students						2016–2017							
	2017–2018	Boundary Implement ed	2018–2019	2019–2020	2020–2021	2021–2022	2022–2023	Race/Ethnic Composition						
								% Afr. Amer.	% Asian	% Hispanic	% White	% 2 or More	% FARMS	% ESOL
Beall Elementary School														
Maximum Number of Seats = 638														
<u>No Change:</u>														
Number of Students	813	849	855	865	872	871								
<i>Percent of Building Occupied</i>	127%	133%	134%	136%	137%	137%	12.1%	24.1%	22.0%	35.4%	6.4%	25.0%	15.4%	
<i>Available Seats</i>	(175)	(211)	(217)	(227)	(234)	(233)								
Reassign zones B2, B3, and B7 to Richard Montgomery Cluster ES #5. Zone CG3 is received from College Gardens ES.														
<u>With Change:</u>														
Number of Students	813	643	659	660	676	703								
<i>Percent of Building Occupied</i>	127%	101%	103%	103%	106%	110%	13.6%	17.4%	17.9%	42.7%	8.5%	18.2%	12.0%	
<i>Available Seats</i>	(175)	(5)	(21)	(22)	(38)	(65)								

Option 3

	Projected Number of Students						2016–2017						
	2017–2018	Boundary Implement ed	2018–2019	2019–2020	2020–2021	2021–2022	2022–2023	Race/Ethnic Composition					
								% Afr. Amer.	% Asian	% Hispanic	% White	% 2 or More	% FARMS
College Gardens Elementary School													
Maximum Number of Seats= 693													
<i>No Change:</i>													
Number of Students	879	881	851	848	839	846							
<i>Percent of Building Occupied</i>	127%	127%	123%	122%	121%	122%	17.9%	22.2%	14.4%	38.2%	7.3%	14.5%	14.8%
<i>Available Seats</i>	(186)	(188)	(158)	(155)	(146)	(153)							
Zone CG3 is reassigned to Beall ES. Chinese Immersion is moved to Twinbrook Elementary													
<i>With Change:</i>													
Number of Students	879	650	649	662	658	653							
<i>Percent of Building Occupied</i>	127%	94%	94%	96%	95%	94%	18.4%	24.0%	14.9%	35.4%	7.3%	16.2%	19.4%
<i>Available Seats</i>	(186)	43	44	31	35	40							

Option 3

	Projected Number of Students						2016–2017							
	2017–2018	Boundary Implement ed	2018–2019	2019–2020	2020–2021	2021–2022	2022–2023	Race/Ethnic Composition						
								% Afr. Amer.	% Asian	% Hispanic	% White	% 2 or More	% FARMS	% ESOL
Richard Montgomery Cluster ES #5														
Maximum Number of Seats = 602														
<u>No Change:</u>														
Number of Students			New School Opens											
<i>Percent of Building Occupied</i>														
<i>Available Seats</i>														
Richard Montgomery Cluster ES #5 attending area is comprised of RP2, RP6, B2, B3, B7, and T2														
<u>With Change:</u>														
Number of Students			495	506	513	504	515							
<i>Percent of Building Occupied</i>			82%	84%	85%	84%	86%	11.1%	29.0%	34.0%	21.5%	< 5%	43.5%	31.7%
<i>Available Seats</i>			107	96	89	98	87							

Option 3

	Projected Number of Students						2016–2017						
	Boundary Implement ed						Race/Ethnic Composition						
		2017–2018	2018–2019	2019–2020	2020–2021	2021–2022	2022–2023	% Afr. Amer.	% Asian	% Hispanic	% White	% 2 or More	% FARMS
Ritchie Park Elementary School													
Maximum Number of Seats= 387													
<u>No Change:</u>													
Number of Students	506	514	501	490	503	501							
<i>Percent of Building Occupied</i>	131%	133%	129%	127%	130%	129%	12.6%	22.2%	18.1%	41.1%	5.9%	23.0%	11.3%
<i>Available Seats</i>	(119)	(127)	(114)	(103)	(116)	(114)							
Reassign zones RP2 and RP6 to Richard Montgomery Cluster ES #5.													
<u>With Change:</u>													
Number of Students	506	373	379	375	379	379							
<i>Percent of Building Occupied</i>	131%	96%	98%	97%	98%	98%	10.5%	19.6%	12.3%	50.5%	7.1%	11.9%	6.9%
<i>Available Seats</i>	(119)	14	8	12	8	8							

Option 3

	Projected Number of Students						2016–2017						
	Boundary Implement ed						Race/Ethnic Composition						
		2017–2018	2018–2019	2019–2020	2020–2021	2021–2022	2022–2023	% Afr. Amer.	% Asian	% Hispanic	% White	% 2 or More	% FARMS
Twinbrook Elementary School													
Maximum Number of Seats= 553													
<u>No Change:</u>													
Number of Students	575	593	587	599	596	581							
<i>Percent of Building Occupied</i>	104%	107%	106%	108%	108%	105%	10.7%	13.5%	61.0%	11.4%	< 5%	68.7%	50.1%
<i>Available Seats</i>	(22)	(40)	(34)	(46)	(43)	(28)							
Zone T2 is reassigned to Richard Montgomery Cluster ES #5 and Chinese Immersion is assigned to Twinbrook ES.													
<u>With Change:</u>													
Number of Students	575	592	590	593	592	604							
<i>Percent of Building Occupied</i>	104%	107%	107%	107%	107%	109%	11.7%	18.5%	47.5%	17.3%	5.1%	46.0%	32.3%
<i>Available Seats</i>	(22)	(39)	(37)	(40)	(39)	(51)							

Option # 4

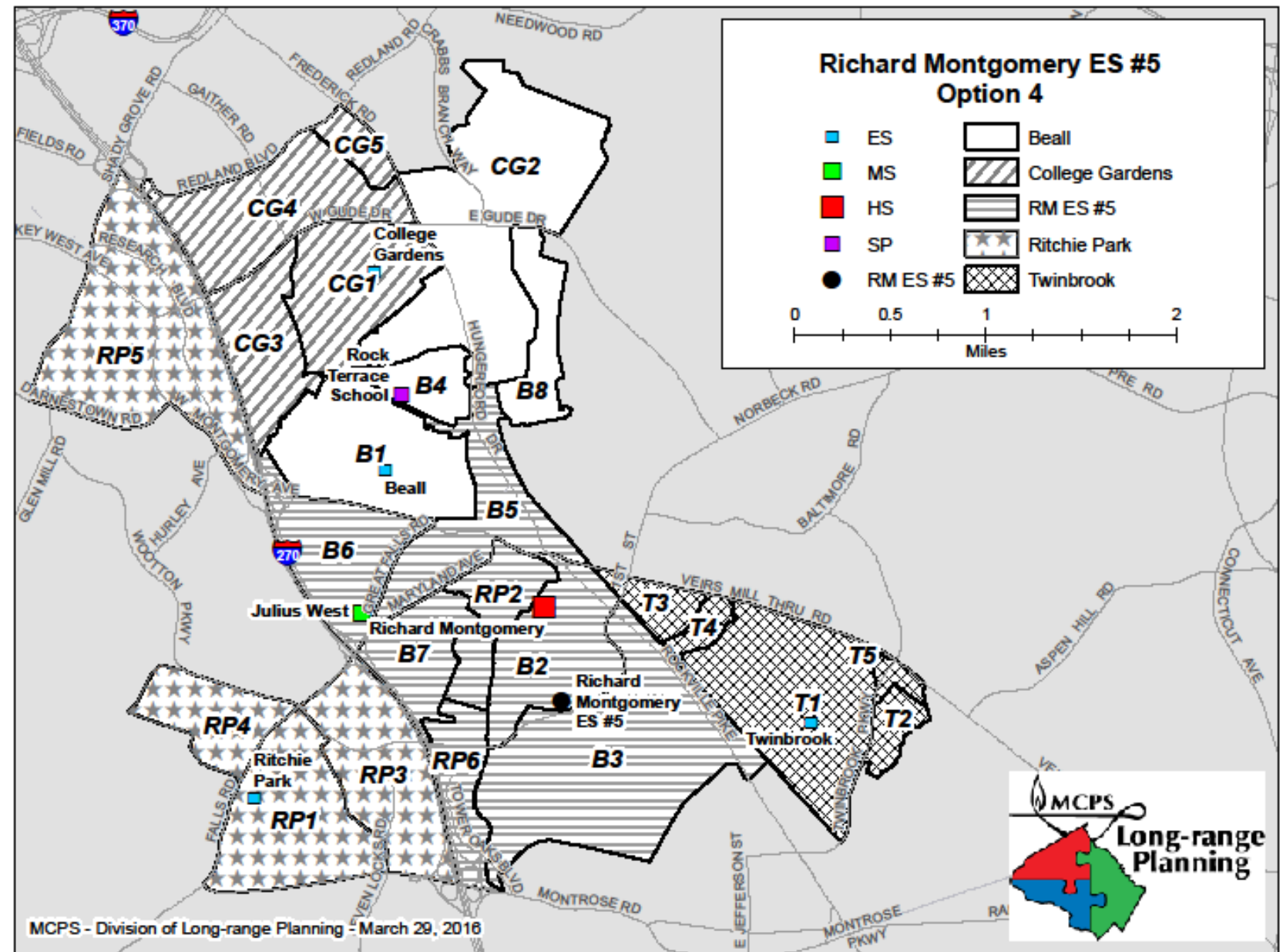
B2, B3, B5, B6 and B7 from Beall Elementary to Richard Montgomery Cluster Elementary #5.

Zone CG2 is reassigned from College Gardens Elementary to Beall ES.

Chinese Immersion is moved from College Gardens Elementary to Beall ES.

Reassign zones RP2 and RP6 from Ritchie Park Elementary to Richard Montgomery Cluster Elementary #5.

- B2, B3, B5, B6 and B7 from Beall Elementary to Richard Montgomery Cluster Elementary #5.
- Zone CG2 is reassigned from College Gardens Elementary to Beall ES.
- Chinese Immersion is moved from College Gardens Elementary to Beall ES.
- Reassign zones RP2 and RP6 from Ritchie Park Elementary to Richard Montgomery Cluster Elementary #5.



Option 4

	Projected Number of Students						2016–2017						
	2017–2018	Boundary Implemented 2018–2019	2019–2020	2020–2021	2021–2022	2022–2023	Race/Ethnic Composition						
							% Afr. Amer.	% Asian	% Hispanic	% White	% 2 or More	% FARMS	% ESOL
Beall Elementary School													
Maximum Number of Seats = 638													
<i>No Change:</i>													
Number of Students	813	849	855	865	872	871							
<i>Percent of Building Occupied</i>	127%	133%	134%	136%	137%	137%	12.1%	24.1%	22.0%	35.4%	6.4%	25.0%	15.4%
<i>Available Seats</i>	(175)	(211)	(217)	(227)	(234)	(233)							
Reassign zones B2, B3, B5, B6, and B7 to Richard Montgomery Cluster ES #5. Zone CG2 is received from College Gardens ES. Chinese Immersion is assigned to Beall ES.													
<i>With Change:</i>													
Number of Students	813	594	593	583	587	601							
<i>Percent of Building Occupied</i>	127%	93%	93%	91%	92%	94%	15.4%	21.8%	17.1%	35.6%	10.0%	24.2%	13.4%
<i>Available Seats</i>	(175)	44	45	55	51	37							

Option 4

	Projected Number of Students						2016–2017						
	2017–2018	Boundary Implemented 2018–2019	2019–2020	2020–2021	2021–2022	2022–2023	Race/Ethnic Composition						
							% Afr. Amer.	% Asian	% Hispanic	% White	% 2 or More	% FARMS	% ESOL
College Gardens Elementary School													
Maximum Number of Seats= 693													
<u>No Change:</u>													
Number of Students	879	881	851	848	839	846							
<i>Percent of Building Occupied</i>	127%	127%	123%	122%	121%	122%	17.9%	22.2%	14.4%	38.2%	7.3%	14.5%	14.8%
<i>Available Seats</i>	(186)	(188)	(158)	(155)	(146)	(153)							
Zone CG2 is reassigned to Beall ES. Chinese Immersion is moved to Beall Elementary.													
<u>With Change:</u>													
Number of Students	879	635	637	648	642	637							
<i>Percent of Building Occupied</i>	127%	92%	92%	94%	93%	92%	18.5%	22.4%	14.5%	37.7%	6.9%	15.1%	18.2%
<i>Available Seats</i>	(186)	58	56	45	51	56							

Option 4

	Projected Number of Students						2016-2017							
	2017-2018	Boundary Implemented	2018-2019	2019-2020	2020-2021	2021-2022	2022-2023	Race/Ethnic Composition						
								% Afr. Amer.	% Asian	% Hispanic	% White	% 2 or More	% FARMS	% ESOL
Richard Montgomery Cluster ES #5														
Maximum Number of Seats = 602														
<u>No Change:</u>														
Number of Students			New School Opens											
Percent of Building Occupied														
Available Seats														
Richard Montgomery Cluster ES #5 attending area is comprised of RP2, RP6, B2, B3, B5, B6, B7														
<u>With Change:</u>														
Number of Students			594	620	640	641	668							
Percent of Building Occupied			99%	103%	106%	106%	111%	10.3%	30.3%	23.4%	31.2%	5.0%	27.1%	20.2%
Available Seats			8	(18)	(38)	(39)	(66)							

Option 4

	Projected Number of Students						2016–2017						
	2017–2018	Boundary Implemented 2018–2019	2019–2020	2020–2021	2021–2022	2022–2023	Race/Ethnic Composition						
							% Afr. Amer.	% Asian	% Hispanic	% White	% 2 or More	% FARMS	% ESOL
Ritchie Park Elementary School													
Maximum Number of Seats= 387													
<u>No Change:</u>													
Number of Students	506	514	501	490	503	501							
Percent of Building Occupied	131%	133%	129%	127%	130%	129%	12.6%	22.2%	18.1%	41.1%	5.9%	23.0%	
Available Seats	(119)	(127)	(114)	(103)	(116)	(114)						11.3%	
Reassign zones RP2 and RP6 to Richard Montgomery Cluster ES #5.													
<u>With Change:</u>													
Number of Students	506	373	379	375	379	379							
Percent of Building Occupied	131%	96%	98%	97%	98%	98%	10.5%	19.6%	12.3%	50.5%	7.1%	11.9%	
Available Seats	(119)	14	8	12	8	8						6.9%	

Option 4

	Projected Number of Students						2016–2017						
	2017–2018	Boundary Implemented 2018–2019	2019–2020	2020–2021	2021–2022	2022–2023	Race/Ethnic Composition						
							% Afr. Amer.	% Asian	% Hispanic	% White	% 2 or More	% FARMS	% ESOL
Twinbrook Elementary School													
Maximum Number of Seats= 553													
<u>No Change:</u>													
Number of Students	575	593	587	599	596	581							
<i>Percent of Building Occupied</i>	104%	107%	106%	108%	108%	105%	10.7%	13.5%	61.0%	11.4%	< 5%	68.7%	50.1%
<i>Available Seats</i>	(22)	(40)	(34)	(46)	(43)	(28)							
<u>With Change:</u>													
Number of Students	575	593	587	599	596	581							
<i>Percent of Building Occupied</i>	104%	107%	106%	108%	108%	105%	10.7%	13.5%	61.0%	11.4%	< 5%	68.7%	50.1%
<i>Available Seats</i>	(22)	(40)	(34)	(46)	(43)	(28)							

Cluster Demographics

Schools	2016–2017						2015–2016		
	Total Enrollment	Two or more races %	Black or Afr. Amer. %	Asian%	Hispanic %	White %	FARMS%*	ESOL%**	Mobility Rate%***
Richard Montgomery HS	2394	≤ 5.0%	16.5%	25.9%	23.3%	29.6%	18.4%	8.3%	9.2%
Julius West MS	1316	6.4%	15.7%	19.2%	24.8%	33.7%	26.4%	9.5%	9.8%
Beall ES	814	6.4%	12.0%	24.1%	21.9%	35.3%	27.2%	16.0%	12.3%
College Gardens ES	878	7.3%	17.9%	22.1%	14.4%	38.0%	14.1%	15.6%	13.1%
Ritchie Park ES	512	5.9%	12.5%	22.5%	17.8%	40.8%	21.8%	9.8%	11.7%
Twinbrook ES	563	≤ 5.0%	10.7%	13.5%	60.7%	11.4%	66.1%	48.1%	17.6%
Elementary Cluster Total	2767	6.0%	13.7%	21.0%	26.6%	32.3%	29.6%	20.9%	13.5%
Elementary County Total	76428	5.2%	21.3%	13.8%	32.0%	27.4%	40.1%	23.1%	13.0%

*Percent of students approved for Free and Reduced-priced Meals Program (FARMS) during the 2015–2016 school year.

**Percent of English for Speakers of Other Languages (ESOL) during the 2015–2016 school year. High School students are served in regional ESOL centers.

***Mobility Rate is the number of entries plus withdrawals during the 2015–2016 school year compared to total enrollment.

Notes: Native Hawaiian/Pacific Islander and American Indian/Alaskan Native categories total less than 1% and were therefore excluded from the table.

Due to federal and state guidelines, demographic characteristics of schools of less than or equal to 5.0% are reported as ≤ 5.0%.

Review of Options 1-4

Next Steps

Questions?

- Committee questions
- Observer questions

Committee Schedule

All meetings will be held from 7:00 p.m. to 9:00 p.m. at College Gardens ES

- | | | |
|---|---------------|--|
| | Feb 28 | First Community-wide meeting to present process and timeline |
| 1 | Mar 15 | Committee charge, overview of process, timeline, review of zones to build options, development of criteria to evaluate options |
| 2 | Mar 23 | Staff presents first set of options |
| 3 | Apr 5 | Feedback on first set of options |
| 4 | Apr 25 | If needed, staff presents a second set of options. |
| 5 | May 3 | Feedback on second set of options and draft committee report. |
| | May 9 | Second Community-wide meeting to present options and get feedback. |
| 6 | May 17 | Committee members submit option evaluations and schools submit position papers |

www.montgomeryschoolsmd.org/departments/planning/rmes.aspx

Thank you for attending.
Please complete a feedback form.

All materials will be posted on the following website:

www.montgomeryschoolsmd.org/departments/planning/rmes.aspx