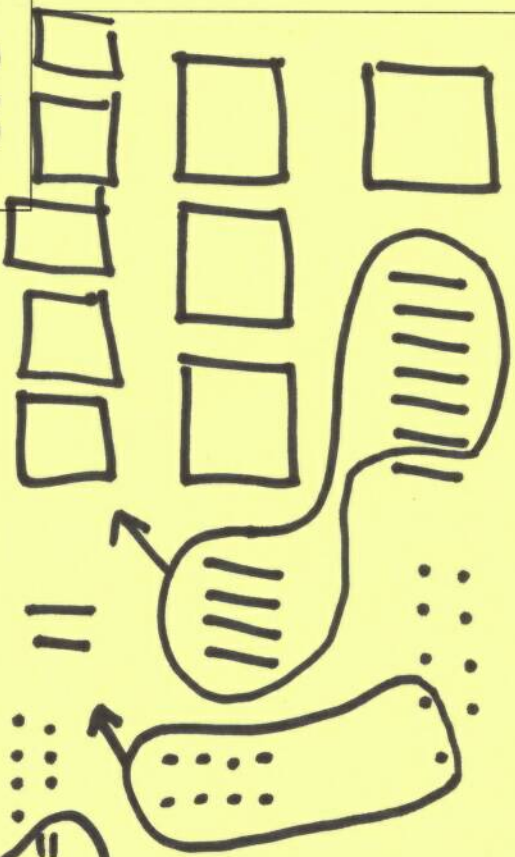


Concrete Model

Students use
Base 10 blocks
to add.

Written Method: Base 10 Models



Written Method: Number Line

179 + 348

Written Method: Numerals

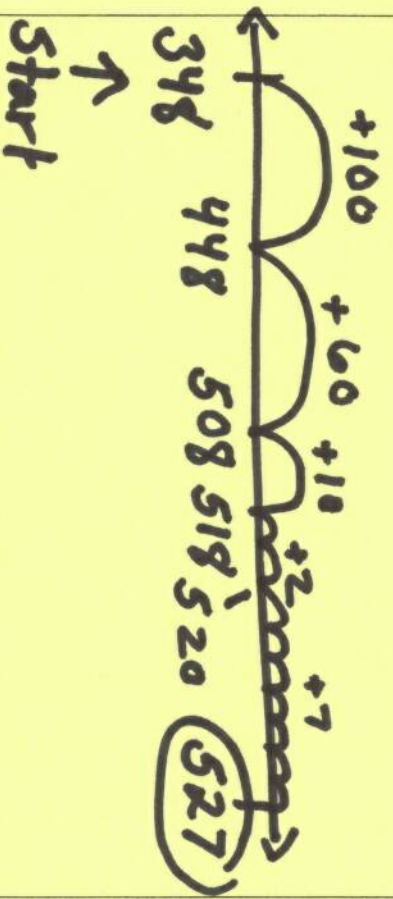
179 + 348

100 + 300 = 400

70 + 30 = 100 + 10

9 + 8 = 17

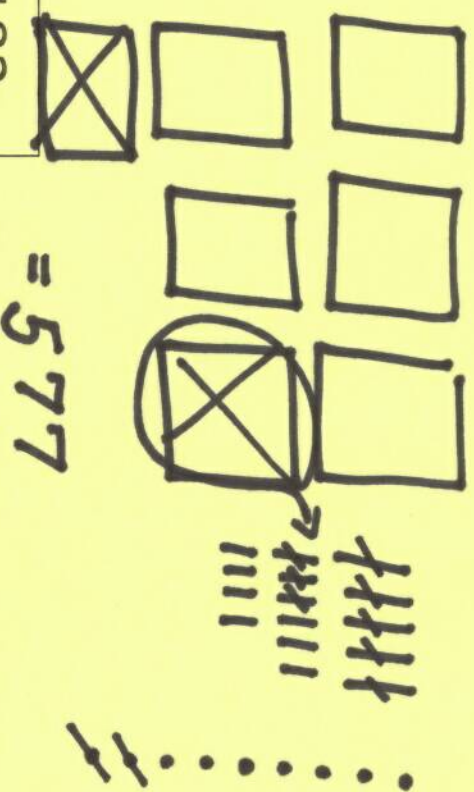
= 527



Concrete Model

Students use Base 10 blocks to subtract.

Written Method: Base 10 Models



$$759 - 182$$

Written Method: Numerals

$$759 - 182$$

$$150 - 80 = 70$$

$$600 - 100 = 500$$

$$9 - 2 = 7$$

$$= 577$$

Written Method: Number Line

