

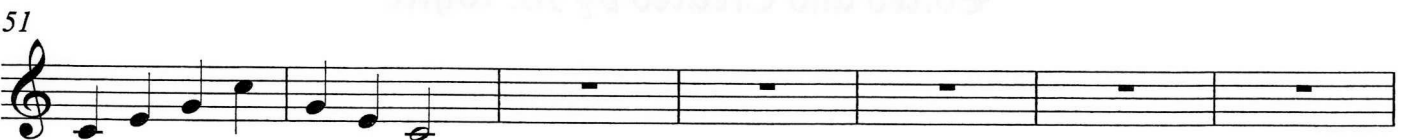
Band - Major - Treble

Bethesda-Chevy Chase High School  
Music Department

**Scales,  
Chorales, and  
Variations for  
both Band  
and Orchestra**

Edited and Created by M. White

# Scale Warm-Up



# Chorale

Soprano

Musical staff for Soprano, measures 1-8. The staff is in 4/4 time and contains a sequence of notes: G4, A4, B4, C5, D5, E5, F5, G5, followed by rests for the remainder of the staff.

9 Alto

Musical staff for Alto, measures 9-16. The staff is in 4/4 time and contains a sequence of notes: G4, A4, B4, C5, D5, E5, F5, G5, followed by rests for the remainder of the staff.

17 Tenor

Musical staff for Tenor, measures 17-24. The staff is in 4/4 time and contains a sequence of notes: G4, A4, B4, C5, D5, E5, F5, G5, followed by rests for the remainder of the staff.

25 Bass

Musical staff for Bass, measures 25-32. The staff is in 4/4 time and contains a sequence of notes: G4, A4, B4, C5, D5, E5, F5, G5, followed by rests for the remainder of the staff.

33

Musical staff for Soprano, measures 33-40. The staff is in 4/4 time and contains rests for the entire duration.

41 Soprano

Musical staff for Soprano, measures 41-45. The staff is in 4/4 time and contains a sequence of notes: G4, A4, B4, C5, D5, E5, F5, G5, followed by rests for the remainder of the staff.

46 Alto

Musical staff for Alto, measures 46-50. The staff is in 4/4 time and contains a sequence of notes: G4, A4, B4, C5, D5, E5, F5, G5, followed by rests for the remainder of the staff.

51 Tenor

Musical staff for Tenor, measures 51-56. The staff is in 4/4 time and contains a sequence of notes: G4, A4, B4, C5, D5, E5, F5, G5, followed by rests for the remainder of the staff.

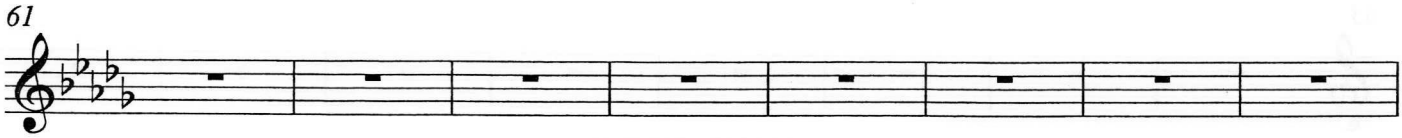
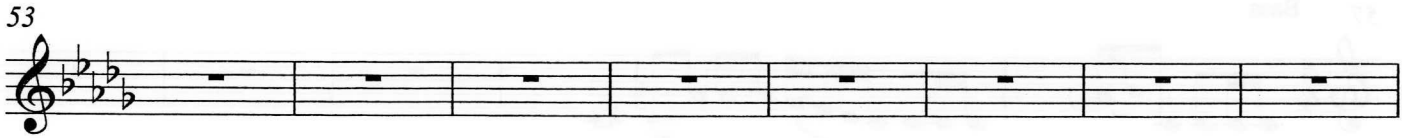
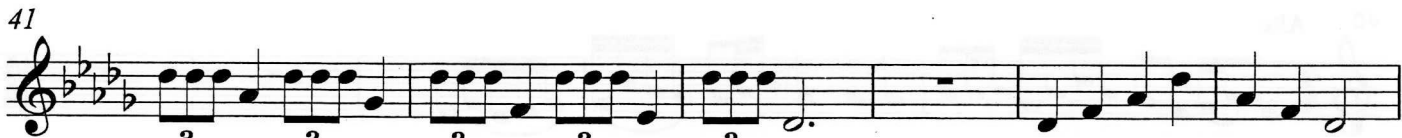
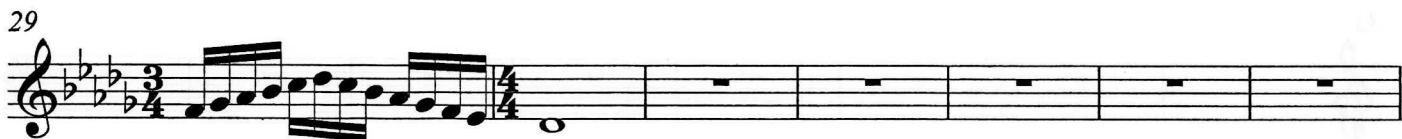
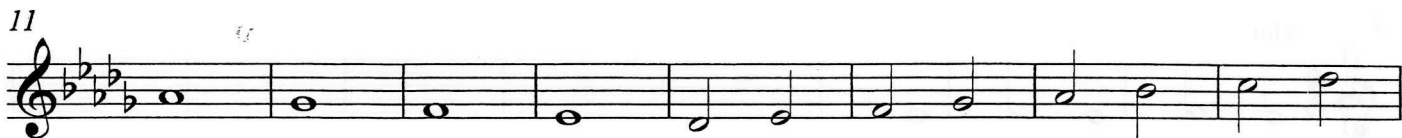
57 Bass

Musical staff for Bass, measures 57-62. The staff is in 4/4 time and contains a sequence of notes: G4, A4, B4, C5, D5, E5, F5, G5, followed by rests for the remainder of the staff.

63

Musical staff for Soprano, measures 63-70. The staff is in 4/4 time and contains rests for the entire duration.

# Scale Warm-Up



# Chorale

Soprano

Musical staff for Soprano, measures 1-8. The staff is in treble clef with a key signature of three flats and a 4/4 time signature. The melody consists of quarter notes: G4, A4, Bb4, C5, followed by rests for the remainder of the phrase.

9 Alto

Musical staff for Alto, measures 9-16. The staff is in treble clef with a key signature of three flats and a 4/4 time signature. The melody consists of quarter notes: G4, A4, Bb4, C5, followed by rests for the remainder of the phrase.

17 Tenor

Musical staff for Tenor, measures 17-24. The staff is in treble clef with a key signature of three flats and a 4/4 time signature. The melody consists of quarter notes: G4, A4, Bb4, C5, followed by rests for the remainder of the phrase.

25 Bass

Musical staff for Bass, measures 25-32. The staff is in treble clef with a key signature of three flats and a 4/4 time signature. The melody consists of quarter notes: G4, A4, Bb4, C5, followed by rests for the remainder of the phrase.

33

Musical staff for Soprano, measures 33-40. The staff is in treble clef with a key signature of three flats and a 4/4 time signature. The staff contains rests for all measures.

41 Soprano

Musical staff for Soprano, measures 41-45. The staff is in treble clef with a key signature of three flats and a 4/4 time signature. The melody consists of eighth notes: G4, A4, Bb4, C5, G4, A4, Bb4, C5, G4, A4, Bb4, C5, G4, A4, Bb4, C5, followed by rests for the remainder of the phrase.

46 Alto

Musical staff for Alto, measures 46-50. The staff is in treble clef with a key signature of three flats and a 4/4 time signature. The melody consists of eighth notes: G4, A4, Bb4, C5, G4, A4, Bb4, C5, G4, A4, Bb4, C5, G4, A4, Bb4, C5, followed by rests for the remainder of the phrase.

51 Tenor

Musical staff for Tenor, measures 51-56. The staff is in treble clef with a key signature of three flats and a 4/4 time signature. The melody consists of eighth notes: G4, A4, Bb4, C5, G4, A4, Bb4, C5, G4, A4, Bb4, C5, G4, A4, Bb4, C5, followed by rests for the remainder of the phrase.

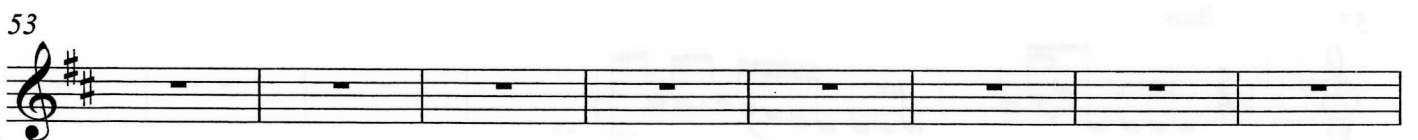
57 Bass

Musical staff for Bass, measures 57-62. The staff is in treble clef with a key signature of three flats and a 4/4 time signature. The melody consists of eighth notes: G4, A4, Bb4, C5, G4, A4, Bb4, C5, G4, A4, Bb4, C5, G4, A4, Bb4, C5, followed by rests for the remainder of the phrase.

63

Musical staff for Soprano, measures 63-70. The staff is in treble clef with a key signature of three flats and a 4/4 time signature. The staff contains rests for all measures.

# Scale Warm-Up



# Chorale

Soprano



9 Alto



17 Tenor



25 Bass



33



41 Soprano



46 Alto



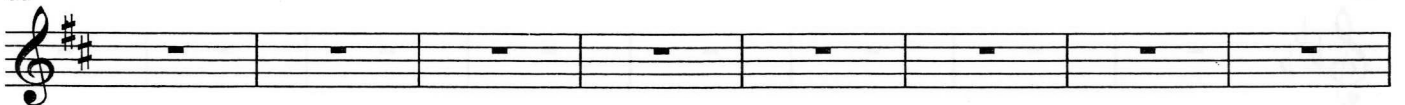
51 Tenor



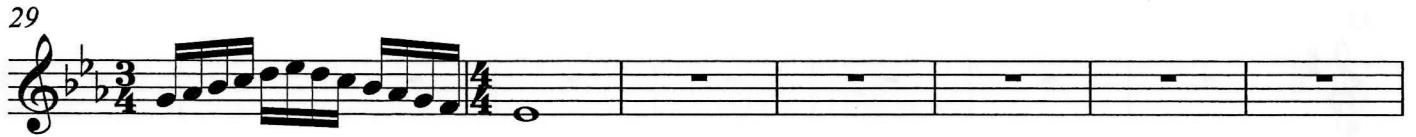
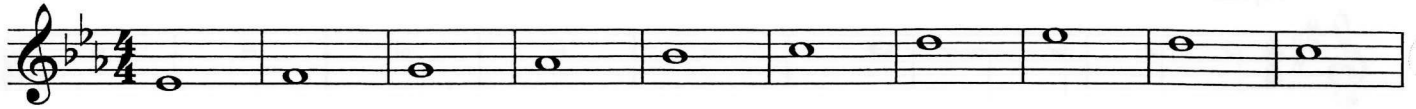
57 Bass



63



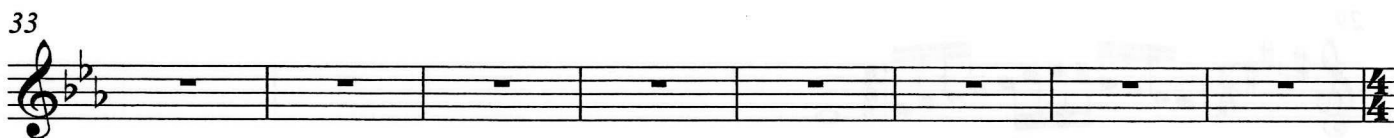
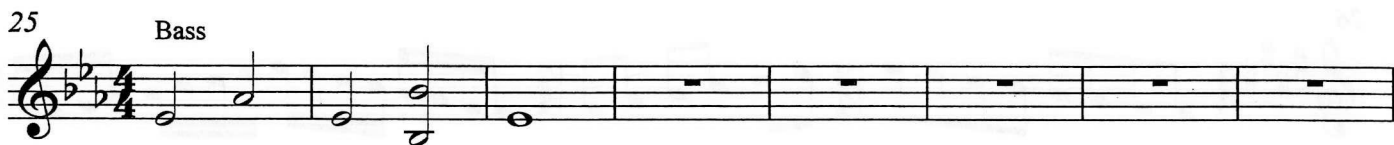
# Scale Warm-Up



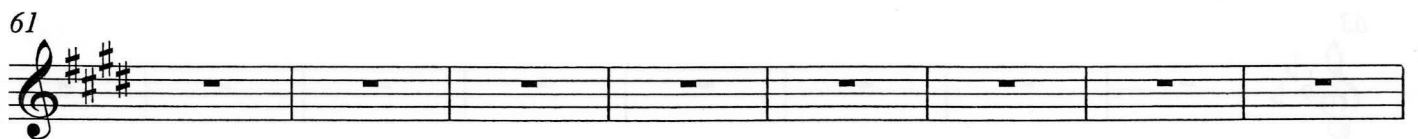
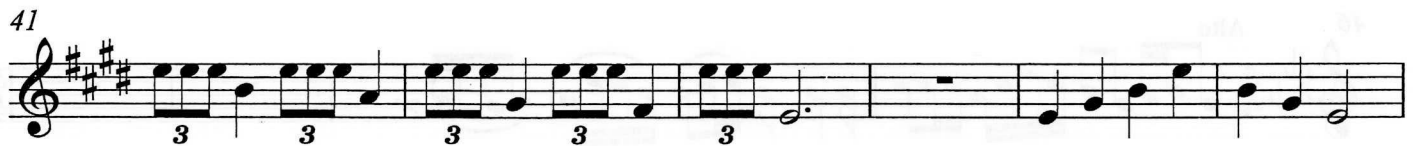
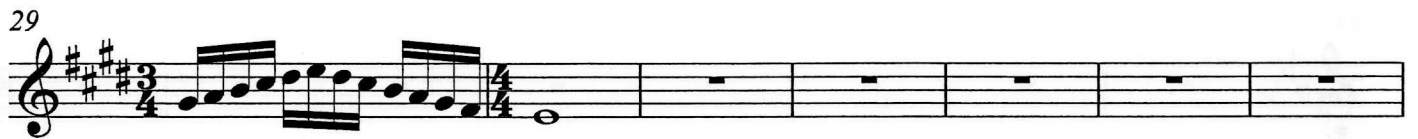
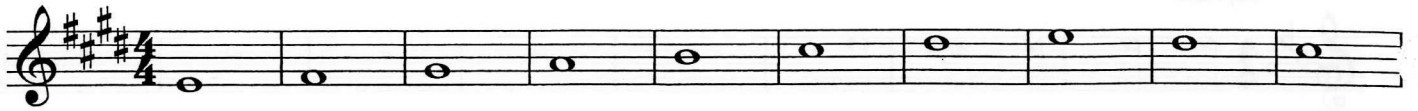


# Chorale

Soprano

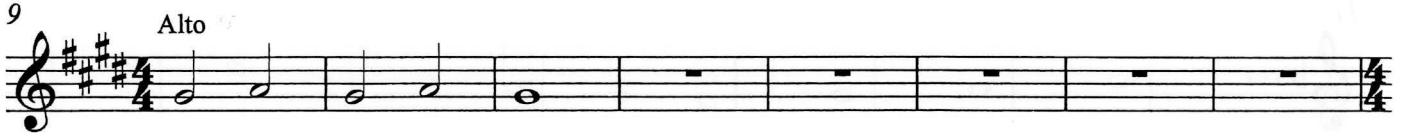
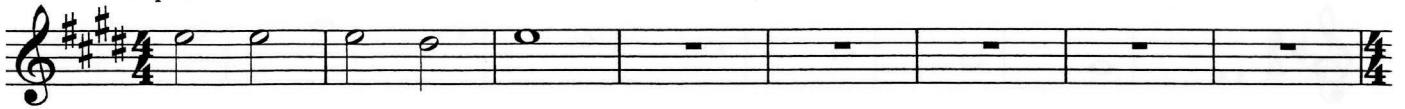


# Scale Warm-Up

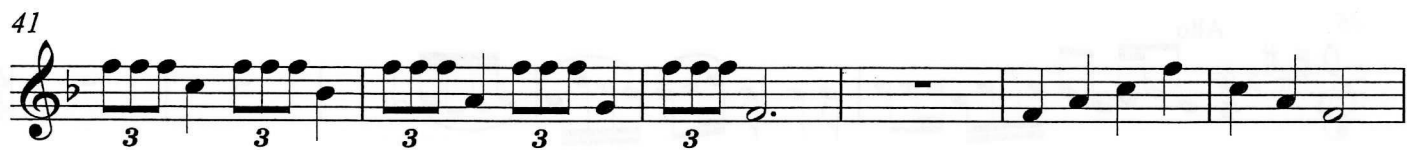


# Chorale

Soprano



# Scale Warm-Up



# Chorale

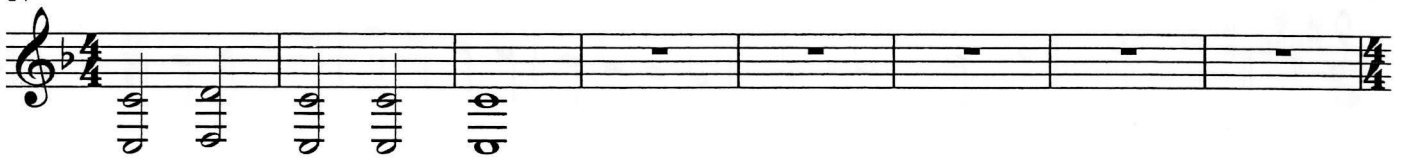
Soprano



9 Alto



17 Tenor



25 Bass



33



41 Soprano



46 Alto



51 Tenor



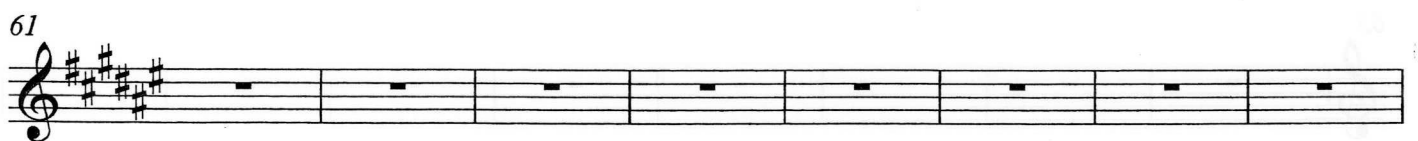
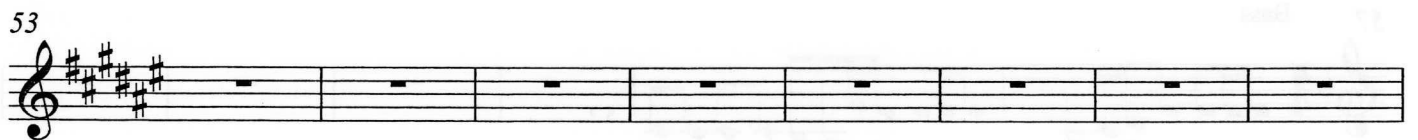
57 Bass



63



# Scale Warm-Up



# Chorale

Soprano

9 Alto

17 Tenor

25 Bass

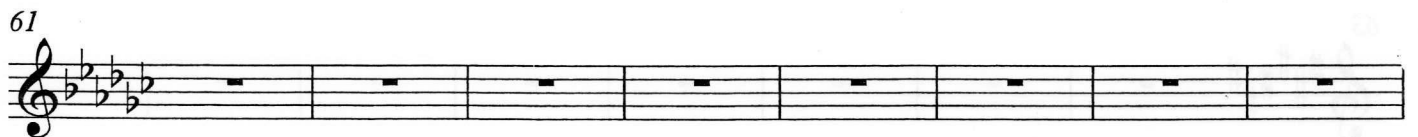
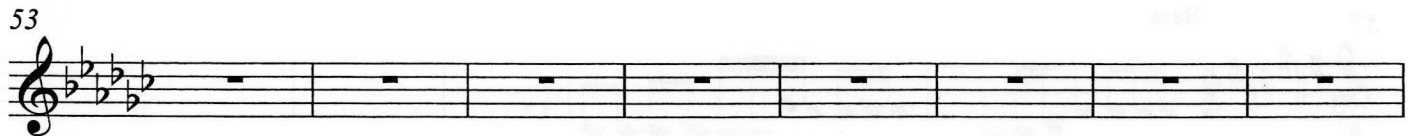
41 Soprano

46 Alto

51 Tenor

57 Bass

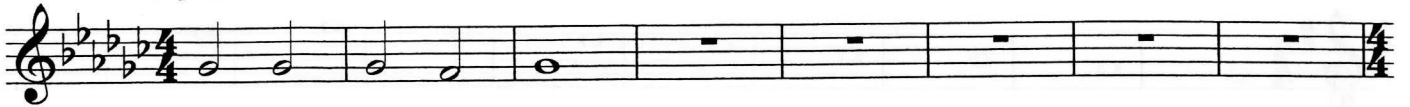
# Scale Warm-Up





# Chorale

Soprano



9 Alto



17 Tenor



25 Bass



33



41 Soprano



46 Alto



51 Tenor



57 Bass



63



# Scale Warm-Up



# Chorale

Soprano

9 Alto

17 Tenor

25 Bass

33

41 Soprano

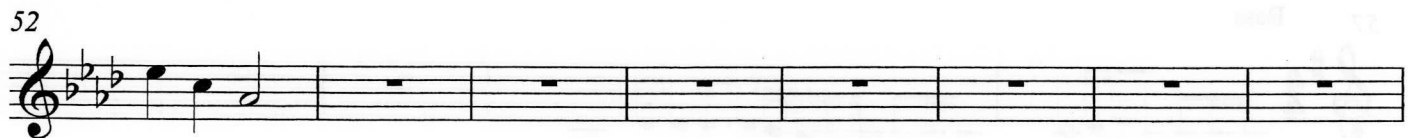
46 Alto

51 Tenor

57 Bass

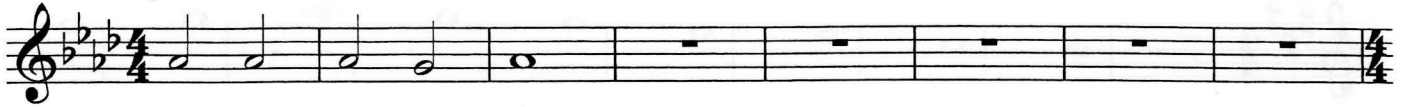
63

# Scale Warm-Up



# Chorale

Soprano



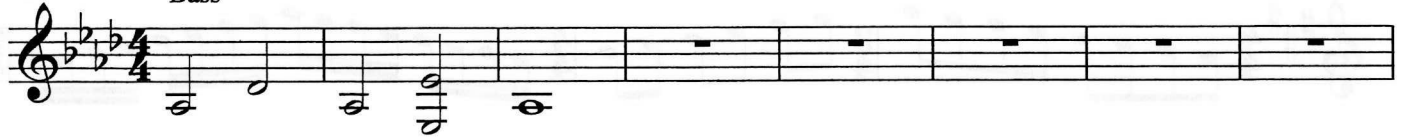
9 Alto



17 Tenor



25 Bass



33



41 Soprano



46 Alto



51 Tenor



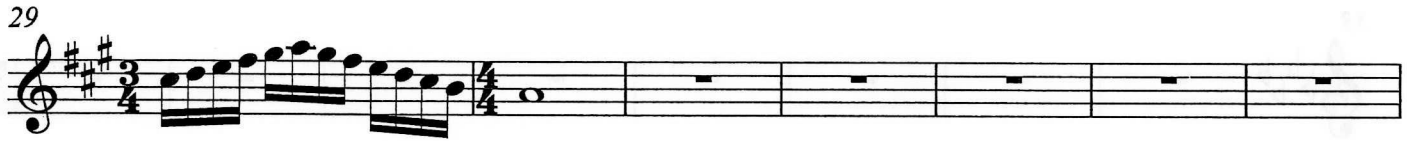
57 Bass



63



# Scale Warm-Up



# Chorale

Soprano

Musical staff for Soprano, measures 1-8. The staff is in treble clef with a key signature of three sharps (F#, C#, G#) and a 4/4 time signature. The melody consists of quarter notes: F#4, G4, A4, B4, C5, followed by rests for the remainder of the phrase.

9 Alto

Musical staff for Alto, measures 9-16. The staff is in treble clef with a key signature of three sharps and a 4/4 time signature. The melody consists of quarter notes: G3, A3, B3, C4, D4, followed by rests.

17 Tenor

Musical staff for Tenor, measures 17-24. The staff is in treble clef with a key signature of three sharps and a 4/4 time signature. The melody consists of quarter notes: G3, A3, B3, C4, D4, followed by rests.

25 Bass

Musical staff for Bass, measures 25-32. The staff is in treble clef with a key signature of three sharps and a 4/4 time signature. The melody consists of quarter notes: G2, A2, B2, C3, D3, followed by rests.

33

Musical staff for Soprano, measures 33-40. The staff is in treble clef with a key signature of three sharps and a 4/4 time signature. The staff contains rests for all measures.

41 Soprano

Musical staff for Soprano, measures 41-45. The staff is in treble clef with a key signature of three sharps and a 4/4 time signature. The melody consists of eighth notes: F#4, G4, A4, B4, C5, D5, E5, F#5, G5, A5, B5, C6, D6, E6, F#6, G6, A6, B6, C7, followed by rests.

46 Alto

Musical staff for Alto, measures 46-50. The staff is in treble clef with a key signature of three sharps and a 4/4 time signature. The melody consists of eighth notes: G3, A3, B3, C4, D4, E4, F#4, G4, A4, B4, C5, D5, E5, F#5, G5, A5, B5, C6, D6, E6, F#6, G6, A6, B6, C7, followed by rests.

51 Tenor

Musical staff for Tenor, measures 51-55. The staff is in treble clef with a key signature of three sharps and a 4/4 time signature. The melody consists of eighth notes: G3, A3, B3, C4, D4, E4, F#4, G4, A4, B4, C5, D5, E5, F#5, G5, A5, B5, C6, D6, E6, F#6, G6, A6, B6, C7, followed by rests.

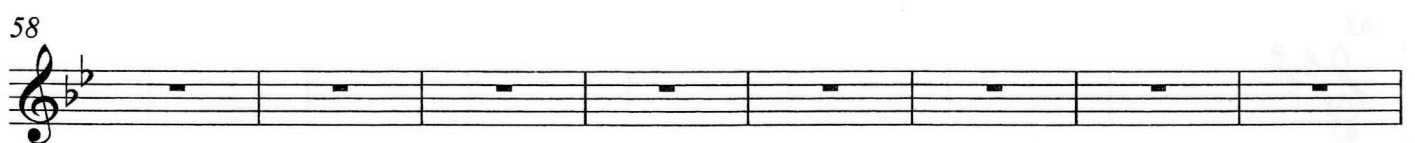
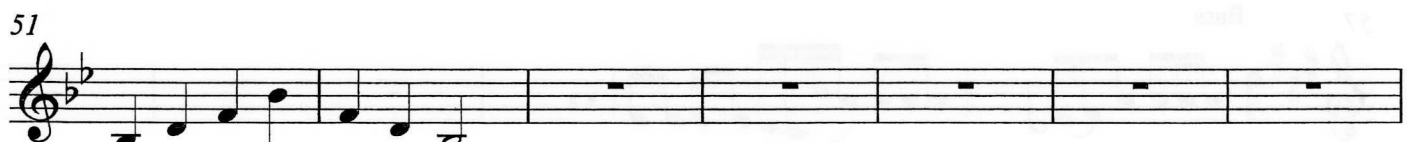
57 Bass

Musical staff for Bass, measures 57-61. The staff is in treble clef with a key signature of three sharps and a 4/4 time signature. The melody consists of eighth notes: G2, A2, B2, C3, D3, E3, F#3, G3, A3, B3, C4, D4, E4, F#4, G4, A4, B4, C5, D5, E5, F#5, G5, A5, B5, C6, D6, E6, F#6, G6, A6, B6, C7, followed by rests.

63

Musical staff for Soprano, measures 63-70. The staff is in treble clef with a key signature of three sharps and a 4/4 time signature. The staff contains rests for all measures.

# Scale Warm-Up





# Chorale

Soprano



9 Alto



17 Tenor



25 Bass



33



41 Soprano



46 Alto



51 Tenor



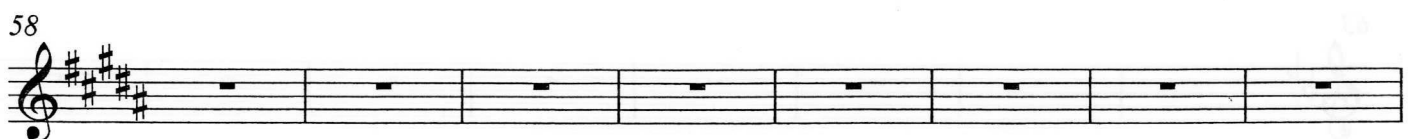
57 Bass



63



# Scale Warm-Up



# Chorale

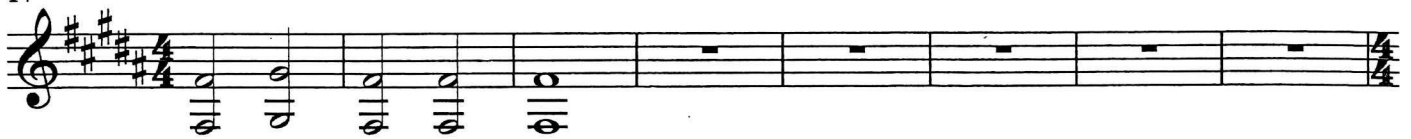
Soprano



9 Alto



17 Tenor



25 Bass



33



41 Soprano



46 Alto



51 Tenor



57 Bass



63

